

DID SCIENCE KILL GOD?

Not at all, the latest evidence overwhelmingly points towards an Intelligent Designer rather than an eternal past or naturalistic creative process.

Mike Azer, Ph.D.

ACKNOWLEDGMENT

I WOULD LIKE TO ACKNOWLEDGE GENESIS APOLOGETICS (WWW.GENESISAPOLOGETICS.COM), ANSWERS IN GENESIS (WWW.ANSWERSINGENESIS.ORG), THE INSTITUTE FOR CREATION RESEARCH (WWW.ICR.ORG), CREATION MINISTRIES INTERNATIONAL (WWW.CREATION.COM), AND CREATION SCIENCE EVANGELISM ([HTTPS://DRDINO.COM/](https://DRDINO.COM/)). MUCH OF THE CONTENT HEREIN HAS BEEN DRAWN FROM (AND IS MEANT TO BE IN ALIGNMENT WITH) THESE BIBLICAL CREATION MINISTRIES. MUCH OF THE CONTENT HEREIN HAS BEEN DRAWN FROM (AND IS MEANT TO BE IN ALIGNMENT WITH) THESE BIBLICAL CREATION MINISTRIES. I'VE ASKED THEM BY PHONE ABOUT USING THEIR PUBLISHED MATERIAL AND THEY WERE GRACIOUS ENOUGH TO GRANT IT TO ME FOR THE EDUCATION PURPOSE AND NOT FOR MAKING MONEY. IN TURN, ANYONE CAN USE THIS MATERIAL HERE WITHIN FOR EDUCATION PURPOSE ONLY.

MY DEEP GRATITUDE ALSO TO MANY DEAR FRIENDS FOR THEIR INVALUABLE ADVICE AND ENCOURAGEMENT WHO PREFERRED TO BE ANONYMOUS.

AT LAST BUT NOT LEAST I AM GRATEFUL TO MY DAUGHTER IRINA ISHAK FOR HER EDITING MUCH OF MY WRITING TO MAKE IT READABLE.

APOLOGETICS PRESENTATION SERIES

This is the first presentation in the Apologetic presentation series. The purpose of this series is **to prepare our kids and youth to survive the vicious attacks on Christianity and God** in all the education and media system. We will post a new presentation every 2-3 weeks. Look for subjects as:

Did Science Kill God? (current)
Where are we Heading
Big Bang or smoke screen
Creation antagonists witness
Evolution or delusion
Evolution Plight
It is Young World After all
Lies into Facts – Grand Canyon
Reclaiming Culture
Satanic Aluminite – Doctrine that Damned America
Scientific facts in The Bible
Six days Creation
The Trojan of Deep Time

Iron Clad Evidence
Humanoid- Myth or Truth
The Incredible Design of the Human Body
The Amazing Created Human Brain (current)
The Amazing Created Human Heart
The Amazing Created Human Respiratory System
The Amazing Created Human Digestive System
The Amazing Created Human DNA
The Amazing Created Human Ear
The Amazing Created Human Eye
The Amazing Created Human Reproduction Process
Intelligent Design
A Scientific Dissent from Darwinism

WHY THIS SERIES?

The purpose of this series is to **teach Apologetics** to our people. It is very important that we equip our self by the right information about the **existence of God & the authenticity and infallibility of His book all with evidence from science**. This kind of education has never been **so badly needed** as it is now **for our kids and youth survive the vicious attacks on the Bible and God** in all walks of life, be it school system, media, press, books, museums, colleges, social, entertainment, ...etc. This vicious attack, although as old as creation itself, it increased during the enlightenment age but **it sky-rocketed since the 1970's**. The root cause of all this attacks **unquestionably is the evolution theory** which replaced the godly creation by godless one and therefor there is no need for a God with all the moral and legal responsibility to submit to His authority and commands and not living sinful life.

This series will have sections **refuting evolution** be it cosmic, chemical, astronomical, organic, and biological. Other sections **discussing all-or-nothing complex systems that are impossible to evolve through bit-by-bit random evolutionary processes as incredible examples of God's handiwork in His creation**.

This current presentation discusses the secular scientists' claim that science proved that the universe came by itself and therefore there is no need for God. Scientific proofs are shown here to prove the opposite. We will touch upon biological, cosmical, logical, paleontological, and anthropic principal evidence. For instance, **if DNA, with all its ingenious enigmatic design, is just the data bank or the hard drive of the living cell, how much more ingenious is the processor that conducts and controls the DNA, RNA, Mitochondria DNA, all the nano machines, ..etc. inside the cell (which I believe is still not fully known)? Now, how much more does the ingenious/designer engineer, GOD, who designed it and blew the breath of life into us, deserve to be praised and worshipped?**

DENYING EVIDENCE

5



Romans 1:20 "For the invisible things of him from the creation of the world are clearly seen, being understood by the things that are made, even his eternal power and Godhead; so that they are without excuse:"



But unfortunately in the last 150+ years many, led by scientists and philosophers, are hiding their heads in the sand to comfort their consciousness. I think this is why they believe they and the ostrich have common ancestor: primordial soup.

G
O
D

I
S

N
O
T

D
E
A
D



*M
O
V
I
E

T
I
M
E*

Please use control + left-mouse click on the link below or copy and paste into browser address bar then come back to this page

<https://1drv.ms/v/s!AupFIK5h5lwIj55Mhl7MQiDaFR3eHA?e=p3EpPj>

Ironically
a theistic
Belgian
Astrono
mer,
Catholic
priest,
Georges
Lemaître
“started”
the Big
Bang
Theory
In 1927



M
O
V
I
E

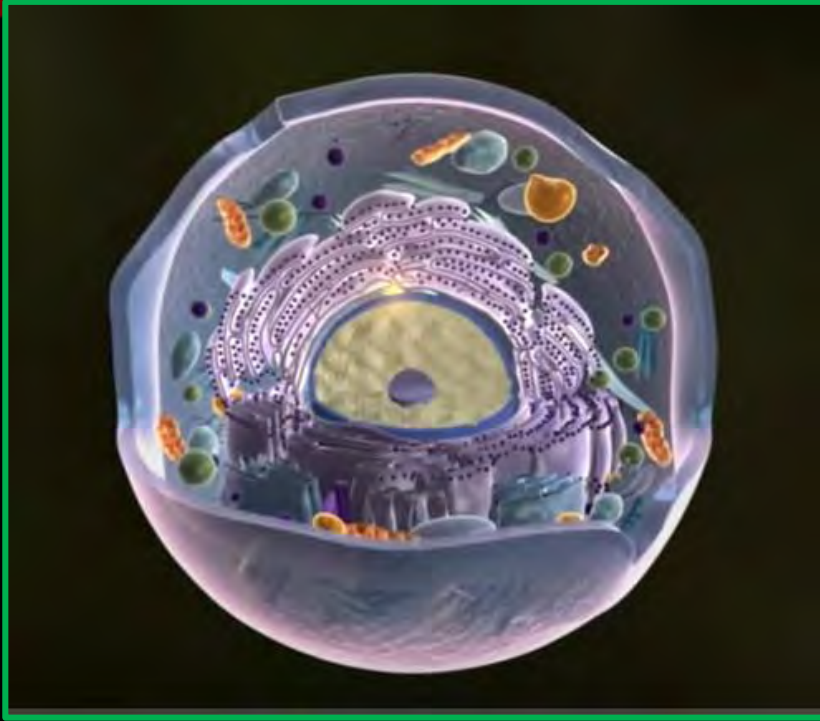
T
I
M
E

Please use control + left mouse click on the link or copy and paste into browser address bar then come
back to this page

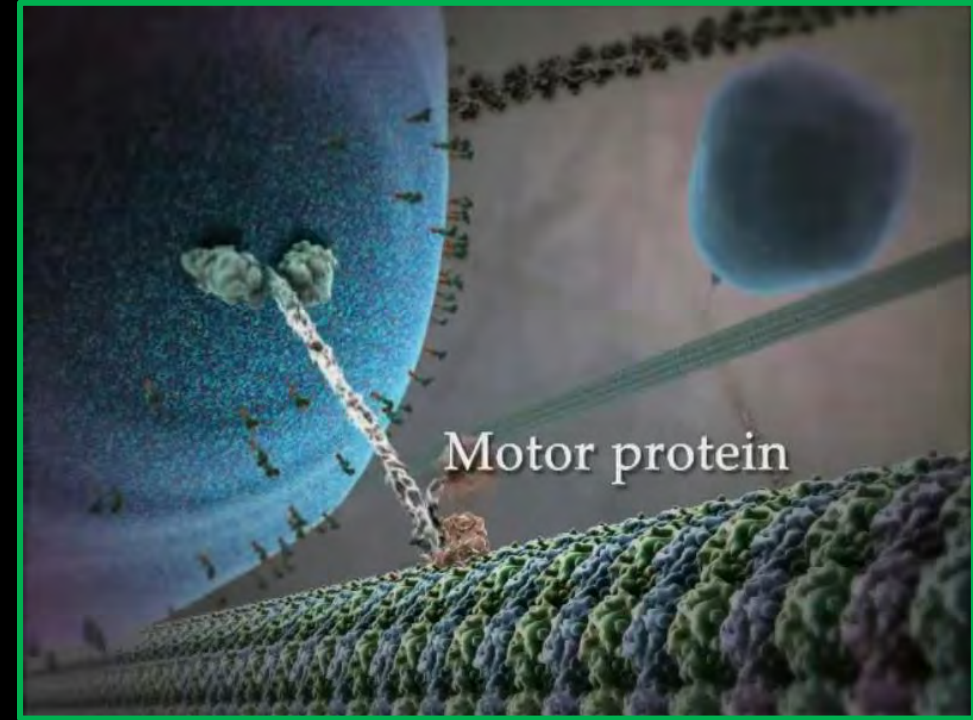
<https://www.youtube.com/watch?v=leoKFUarIvA>

DENYING EVIDENCE

8



From mid-18th to mid-19th Centuries, the revolution and anti-monarchy age, few people led the whole scientific establishment astray by uprooting the trust in centuries long belief in creation and replacing it by man-made evolution religion and abandoning God.



This age led ultimately to the bloodiest 20th century and spread of atheism. This century ironically produced vast advancement in science, like powerful telescopes, electron microscopes, & isotope clocks which prove exceedingly the existence of God.

ASTRONOMY EVIDENCE

9



To take God out of the equation everything has to come naturalistically culminating into the idea that whole cosmos must have come by itself from nothingness. This means the billions of galaxies containing trillions of stars must have come from unscientific. Not only is there no scientific evidence to support this, it would mean the word of God is not trustworthy.

This was given the name the Big Bang (BB). Meaning everything was caused by an unimaginable explosion which created a tremendous amount of energy occupying infinitesimally small region (much less than a period in this slide) producing an unfathomable universe in three minutes 14.5 billion years ago.

EARTH EVIDENCE

10



Nothing can be produced without cause let alone from nothing. Big Bang believers think that a planet suitable for living like ours can be produced by chance which is absurd.



For example many forces in the universe are precisely balanced that a very slight change in any would render the universe impossible. For example, the universe expansion rate if changed by one part in 10^{120} would either collapse the universe or plunges it into heat death.

SOLAR & GALAXY EVIDENCE

11



Also our sun is very stable, has the right temperature, at very suitable distance otherwise the earth would be too hot or too cold for life, the earth orbit is close to perfect circle so the seasons are mild, the earth rotation is very moderate otherwise the nights would be too cold and days too hot, the earth mass is perfect to hold the right amount of atmosphere.

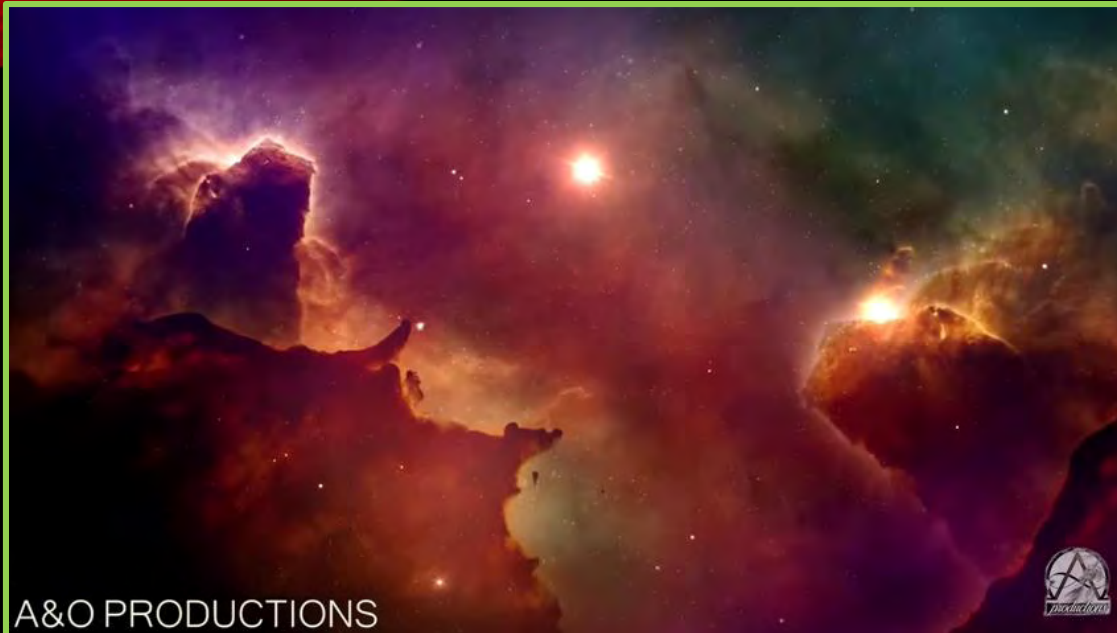
▲ 90. Supernova Remnants

In galaxies similar to our Milky Way Galaxy, a star will explode every 26 years or so.^a These explosions, called *supernovas*, produce gas and dust that expand outward thousands of miles per second. With radio telescopes, these remnants in our galaxy should be visible for a million years. However, only about 7,000 years' worth of supernova debris are seen.^b So, the Milky Way looks young. [See Figure 34.]

There is sufficient evidence pointing to a young universe as it is shown in Genesis. For example, the number of exploded stars (supernova) of 250 shows the milky way is about 6,500 years old and not 14.5 billion years.

GALAXY EVIDENCE

12



Breath taking beauty wherever
you look in the universe
can't be a result of
explosion but the handiwork
of an omniscient loving God.

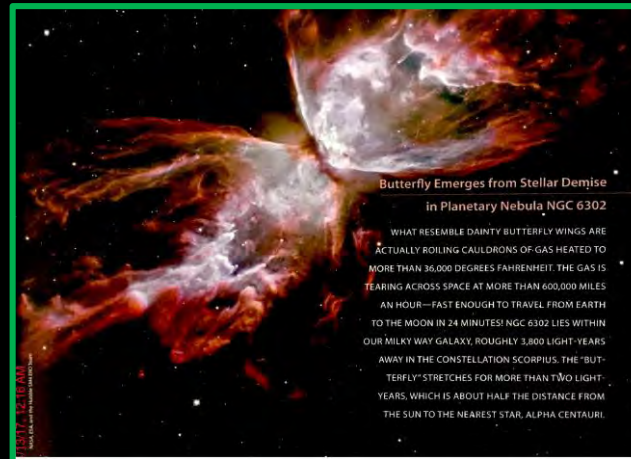
Not only beauty but also order,
organization, harmony, pattern,
systematic, symmetry, uniformity,
precision, and structure. Who
says that a blind conscious-less
heartless watchmaker did it needs
to wake up.

BEAUTY EVIDENCE



The Galaxies Rotate Too Fast!

Evolutionists call this "the winding-up dilemma," which they have known about for over 60 years. The Milky Way Galaxy spins at 245 km per second.



YOUNG AND BEAUTIFUL GALAXIES

14



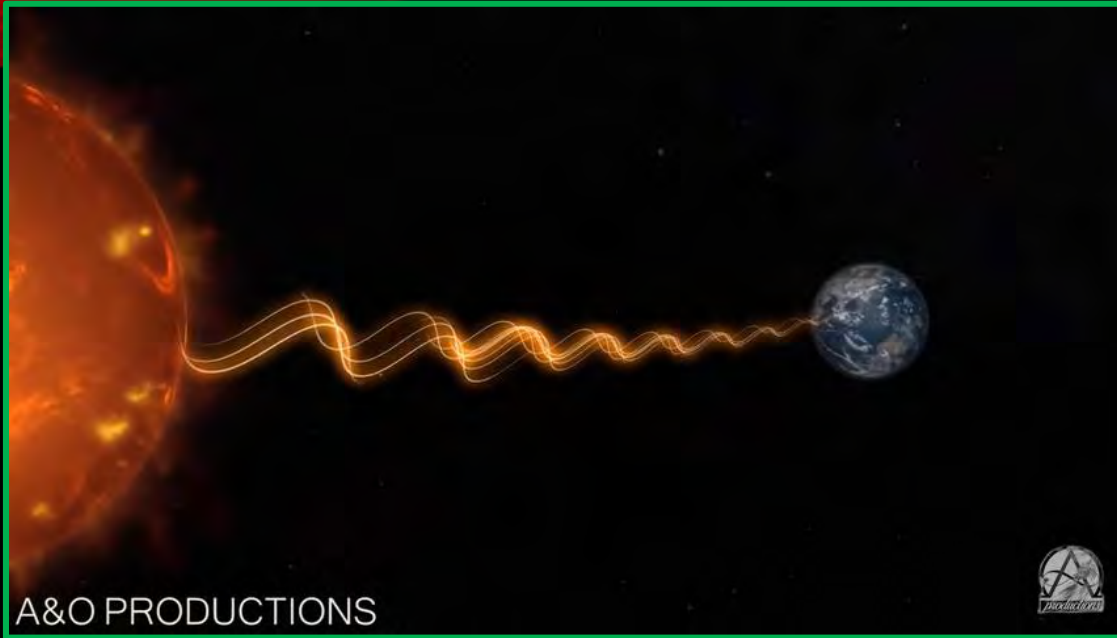
No matter where you look, beauty everywhere

SPLENDID EARTH SUPPORTED BY THE PERFECT STAR/SUN



SPLENDID EARTH

16

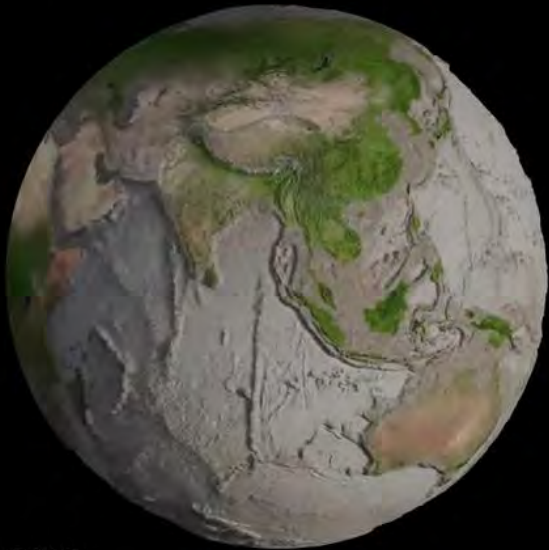


The right amount of sun energy.

A stable sun, not like most stars which have huge eruptions.

SPLENDID EARTH

17



A&O PRODUCTIONS



A&O PRODUCTIONS



If the earth was a little
further from the sun it would
be too cold for life.

And if it was a little closer
to the sun it would be too
hot and barren from life.

SPLENDID EARTH WITH WONDERFUL MOON

18



We are fortunate to have the right size moon at the right distance from the earth. It regulates the ocean tides thus recycling raw material thus keeps the oceans from stagnating and keeps the them alive.

The moon is even so beautiful to adorn our night skies for our pleasure.

There are many more factors which are very fine tuned to sustain life on the earth.

INTERDEPENDENCY

19



On our earth there are many forms of life dependent on each other, for example the insects and bees which pollinate many plants, and which are nurtured by the plant's nectars (and we on the bee's honey).

If one of these dependent forms of life evolved before the other it would not survive. They must have come to existence at the same time.

SPLENDID EARTH EVIDENCE

20



The oceans, basins and air have the right mix of gases. The slightest different would have made life possible.

The earth has a vast amount of water unlike any known planet. Water makes the earth very suitable for life unlike any other planet. As a starter it protects against sudden severe weather changes.

SPLENDID EARTH EVIDENCE

21

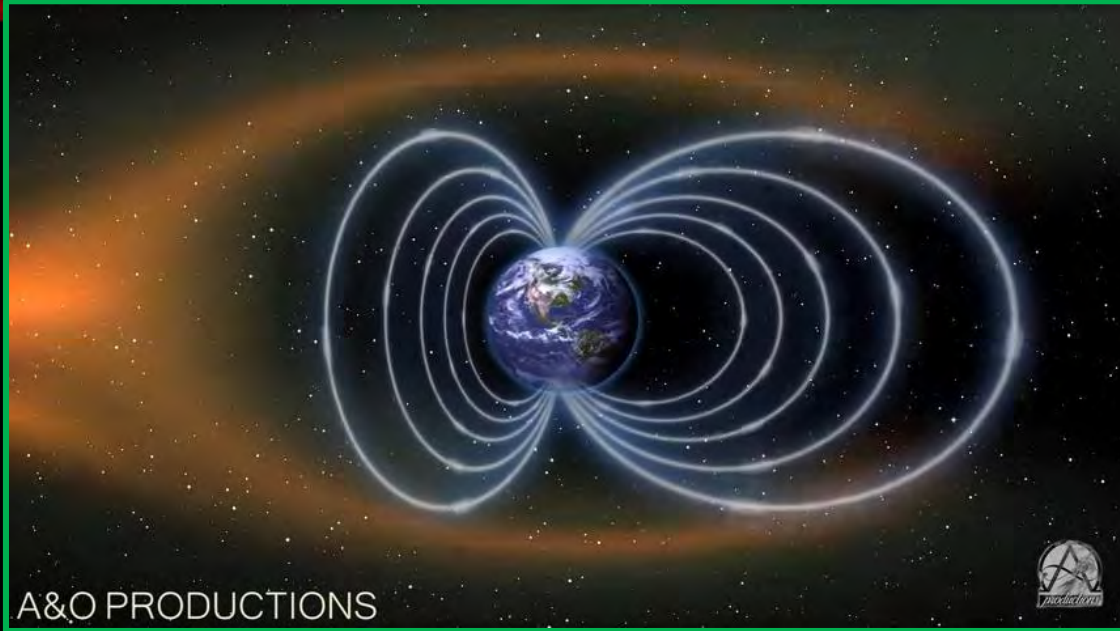


Our atmosphere is rich in Oxygen, 21%, suitable for life. If it was higher the atmosphere would be unstable & explosive, if less life couldn't exist.

More Oxygen would cause fire-instable earth.

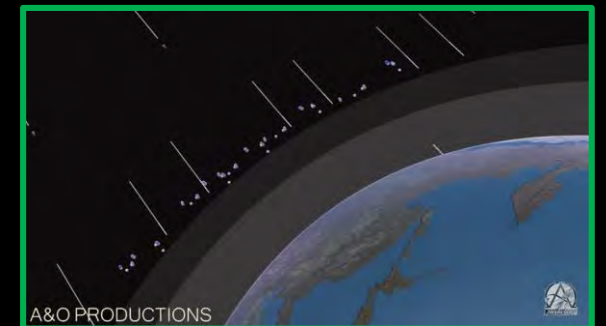
SPLENDID EARTH EVIDENCE

22



The earth has a magnetic field which protects it from harmful cosmic rays while allowing sunlight to get through. It also protects our atmosphere from being blown away by solar winds.

Plants need a lot of sunlight.



SPLENDID EARTH EVIDENCE

23



Sunlight is also a major source for vitamin D which is essential to resist countless diseases.

As a matter of fact the 20th Century has identified some 122 factors critically tuned up to enable life on our earth. Samples of these factors are handled throughout this presentation. Hue Ross has estimated conservatively the chance of fine tuning these parameters is 1 in 10^{138} . These parameters are called "Anthropic Principle". The most important and may be more commonly known are given in the next few slides.

Reference:

Anthropic Principle: The Design Is In The Details.

Excerpt from "I Don't Have Enough Faith to Be an Atheist"

by Norman L. Geisler and Frank Turek.

http://www.inplainsite.org/html/anthropic_principles.html

SAMPLES OF ANTHROPIC PRINCIPLE

Fine Tuning of the Physical Constants of the Universe

Parameter	Max. Deviation
Ratio of Electrons : Protons	$1:10^{37}$
Ratio of Electromagnetic Force : Gravity	$1:10^{40}$
Expansion Rate of Universe	$1:10^{55}$
Mass Density of Universe ¹	$1:10^{59}$
<u>Cosmological Constant</u>	$1:10^{120}$

These numbers represent the maximum deviation from the accepted values, that would either prevent the universe from existing now, not having matter, or be unsuitable for any form of life.

Evidence for the Fine Tuning of the Universe

<https://www.godandscience.org/apologetics/designun.html>

Notes

- Cosmological constant is a factor proportional to the universe size.
- This article gives definitions for the top 34 parameters.
- The ratios in the table represent the maximum tolerance in specific principle value. For example, Ratio of Electromagnetic Force : Gravity 10^{-40} . which means 40 zeros between the decimal point and a "1".
- The effect of deviation of any of the 34 is given briefly in the mentioned article. For example, if the Expansion Rate of Universe increased by 10^{-55} no galaxies will form and if it was less by the same amount the universe will collapse.
- "This type of universe, however, seems to require a degree of fine tuning of the initial conditions that is in apparent conflict with 'common wisdom'."#

Zehavi, I, and A. Dekel. 1999. Evidence for a positive cosmological constant from flows of galaxies and distant supernovae Nature 401: 252-254 401: 252-254.

ANTHROPIC PRINCIPLE

25

- **Oxygen Level:** Explosive > 25% - 15% > Humans suffocate.
- **Atmospheric Transparency:** Not enough solar radiation (also the atmospheric composition of N₂, O₂, CO₂, Ozone) > precise.
- **Moon-Earth Gravitational Interaction:** severe tides, shorter day > precise > climatic instabilities.
- **Carbon Dioxide level:** greenhouse effect > precise > inefficient photosynthesis.
- **Gravity:** Change of 10⁻⁴⁰% sun doesn't exist.
- **Centrifugal Force:** has to balance gravity exactly otherwise planets will not stay in their orbit around the sun.
- **Rate Of Expansion:** Universe collapse > precise > heat death
- **Speed Of Light:** change from 299,792,458 m/s precludes life on earth.
- **Water Vapor Levels:** too hot for life > precise > earth too cold for life

Anthropic Principle: The Design Is In The Details

http://www.inplainsite.org/html/anthropic_principles.html

ANTHROPIC PRINCIPLE

26

- **Jupiter:** Jupiter attracts asteroids like a vacuum thus protecting the earth.
- **The Earth's Crust:** tectonic activity would make life impossible > precise > too much oxygen would be transferred to the crust to support life.
- **The Earth's Rotation speed:** severe storms > precise > severe temperature difference between day and night.
- **Axis Tilt:** change from 23° would cause extreme surface temperatures.
- **Atmospheric Lightning rate:** fire destruction > precise > less N₂ in soil .
- **Seismic Activity:** much more life would be lost > precise > nutrients on the ocean floors and in river runoff would not be cycled back to the continents.

These few selected examples points of the anthropic principle prove strongly that we live on a fine-tuned planet which has the right ingredients at the right amounts to serve and nurture life. Additionally, our solar system and galaxy, as well as our entire universe, appear to be designed precisely to support intelligent life. Some of these aspects are touched in the next slides.

http://www.inplainsite.org/html/anthropic_principles.html

ANTHROPIC PRINCIPLE

27

- A FINELY TUNED GALAXY
- A FINELY TUNED SOLAR SYSTEM
- A FINELY TUNED PLANET
- ONE BLOOMING ROCK

http://www.inplainsite.org/html/anthropic_principles.html

SPLENDID EARTH EVIDENCE

28



Plenty of variety of healthy foods for humans and animals



The transparency of the atmosphere allows us to study other planets, stars, and other phenomena like solar eclipses

SPLENDID EARTH EVIDENCE

29



Perfect solar eclipses enables us to study the sun's corona.

SPLENDID EARTH EVIDENCE

30



A solar eclipse is possible because the sun is 400 times bigger than the moon while it is about 400 times further than the moon from the earth.

God in His sovereignty precisely arranged these sizes and distances to allow us to study the solar corona to gain scientific benefits from such knowledge.

SPLENDID EARTH EVIDENCE

31



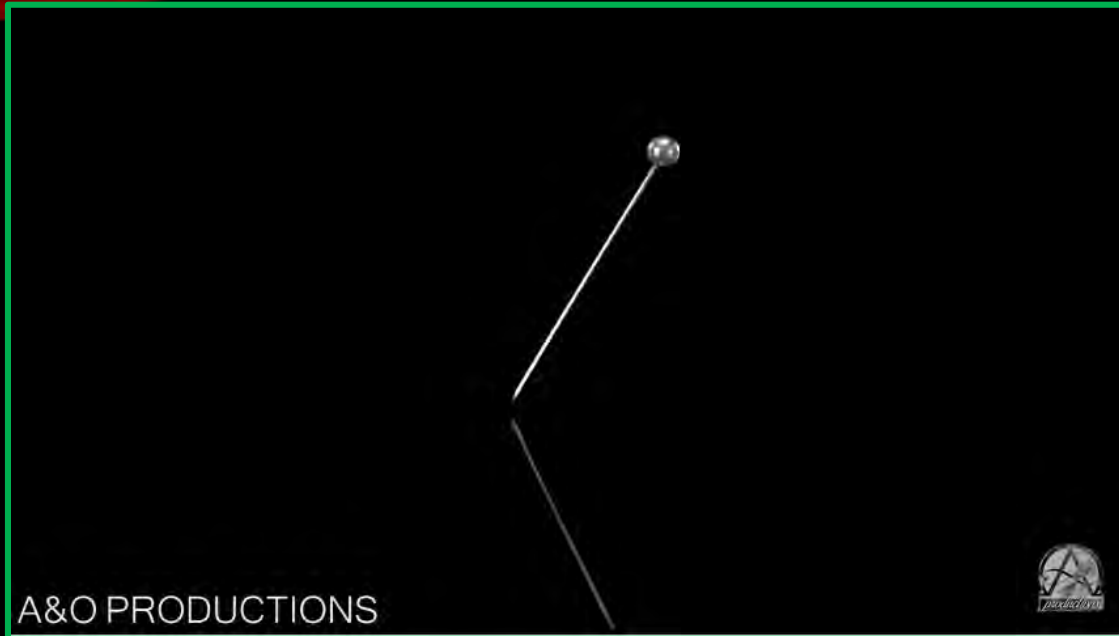
- The moon moves further away from the earth about 2" yearly.
- If the sun, moon & earth were 4.5 Billion years old the moon would be too close to the earth and eclipse would be invisible.
- Also the moon would hit the earth in far less time than 4.5 BY



The Big Bang believes the solar system emerged from swirling dust cloud. Therefore the nature of all planets should be like one another, however, can be further from the truth. The planets don't even rotate in the same direction defying the law of preservation of angular momentum.

COSMOLOGY EVIDENCE

32



- If all the energy in the universe was in a region smaller than a pinhead, gravity would be very enormous, and nothing could escape it.

- This is so unscientific; it breaks all thermodynamic laws.

COSMOLOGY EVIDENCE

33



- It defies logic that explosion creates the order and beauty we see all around us, it destroys it.
- It also defies the third law of thermodynamics too.

We know what an explosion creates:
Chaos

COSMOLOGY EVIDENCE

34

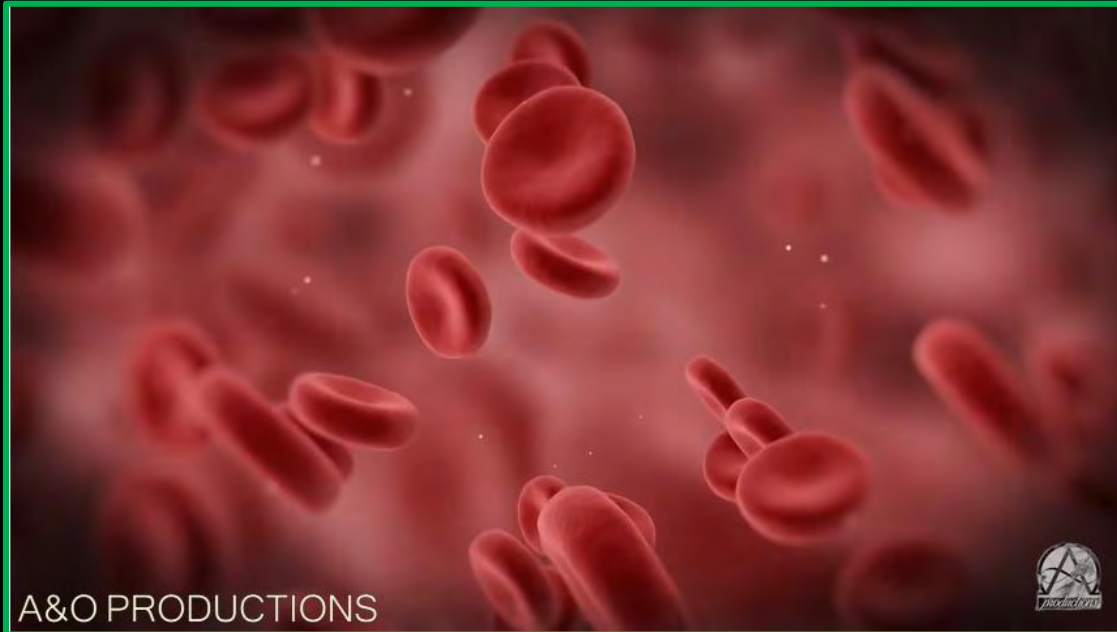


If Big Bang is true every cosmic body should rotate in the same direction; angular momentum preservation, nothing can be further from truth.

- Comets are estimated to live no more than 10,000 years, yet they are still thriving.
- Cosmologist try to patch a solution by inventing unfounded or proven comet clouds.

BIOLOGY EVIDENCE OF YOUNG UNIVERSE

35



- Science ascribes for age of the universe and earth of millions and billions of years supposedly to have enough time to evolve life from inert chemicals thus eliminating the need for creator.
- This is unscientific because it flies in the face of Biogenesis law.

- Besides, blood cells and soft tissues which can't survive more than few thousands of years are found in abundantly in supposedly millions years old fossils.
- See "Published Reports of Original Soft Tissue Fossils" by Brian Thomas, M.S. :

<https://www.icr.org/soft-tissue-list/>

SOFT TISSUES EVIDENCE OF YOUNG UNIVERSE

36

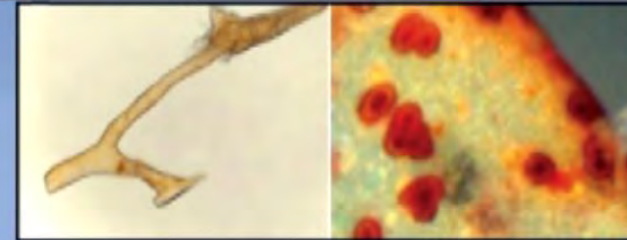
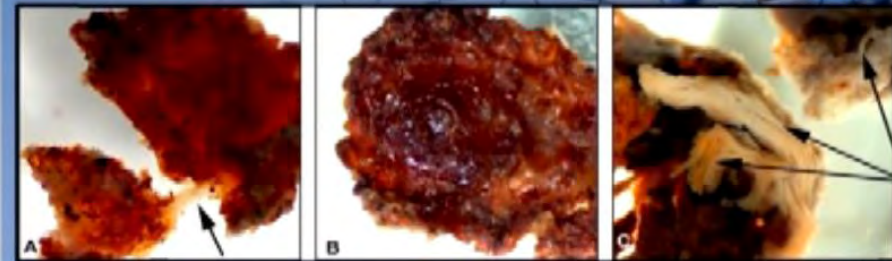
FOSSIL ANALYSES WITH VERIFIED ORIGINAL SOFT TISSUES

Publication Date	Brief Description	Evolutionary Age	Publication
Articles Published in Peer-Reviewed Journals			
1 8/8/1986	<i>Tarbosaurus</i> collagen fibers	80MY	Pawlicki, R. et al, <i>Nature</i> , 211 (5049): 655-657
2 6/14/1992	Seismosaur osteocalcin (bone protein)	150MY	Muyzer, G. et al, <i>Geology</i> , 20: 871-874.
3 9/25/1992	DNA in amber	30MY	Morell, V. et al, <i>Science</i> , 257 (5078): 1860-1862.
4 6/16/1994	Hadrosaur bone possible DNA	65MY	Woodward, S. R., N. J. Weyand, and M. Bunnell, <i>Science</i> , 266 (5188): 1229-1232.
5 5/19/1995	Live bacteria spores from amber	25-40MY	Cano, R. J. and M. K. Borucki, <i>Science</i> , 268 (5213): 1060-1064.
6 6/10/1997	<i>T. rex</i> bone hemoglobin fragments	67MY	Schweitzer, M. et al, <i>PNAS</i> , 94 (12): 6291-6296.
7 8/2/1999	Live bacteria from halite deposit	250MY	Vreeland, R. H. et al, <i>American Society for Microbiology</i> , 99th General Meeting, June 2, 1999, Chicago.
8 8/21/1999	Live bacteria from separate rock salts	250MY	Stán-Lotter, H. et al, <i>Microbiology</i> , 145 (12): 3565-3574.
9 8/21/1999	Cretaceous Madagascar bird keratin	65MY	Schweitzer, M. H. et al, <i>J. Vert. Paleol.</i> , 19 (4): 712-722.
10 9/1/2001	<i>T. rex</i> collagen SEM scans	65MY	Armitage, M., <i>Creation Research Society Quarterly</i> , 38 (2): 61-66.
11 6/26/2004	Live (non-spore) bacteria in amber	120MY	Greenblatt, C. L. et al, <i>Microbial Ecology</i> , 48 (1): 120-127.
12 3/24/2005	<i>T. rex</i> soft tissue	68MY	Schweitzer, M. et al, <i>Science</i> , 307 (5717): 1952-1955.
13 7/25/2006	Soft frog, intact	10MY	McNamara, M. et al, <i>Geology</i> , 34 (6): 641-644.
14 6/30/2007	<i>T. rex</i> collagen	68MY	Schweitzer, M. et al, <i>Science</i> , 318 (5822): 277-280.
15 1/22/2007	<i>Triceratops</i> and <i>T. rex</i> blood vessels	68MY	Schweitzer, M. H. et al, <i>Proc. Roy. Soc. B</i> , 274: 183-197.
16 4/7/2008	<i>Psittacosaurus</i> skin	125MY	Lingham-Soliar, T. et al, <i>Proc. Royal Soc. B</i> , 275: 775-780.
17 7/8/2008	Feather melanocytes	100MY	Vinther, J. et al, <i>Biology Letters</i> , 4: 522-525.
18 4/30/2009	Hadrosaur blood vessels	80MY	Schweitzer, M. et al, <i>Science</i> , 324 (5927): 628-631.
19 8/26/2009	Purple Messel feather nanostructure	40MY	Vinther, J. et al, <i>Biology Letters</i> , 6 (1): 128-131.
20 5/19/2009	Primate "lida" soft body outline	40MY	Franzen, J. L. et al, <i>PLoS ONE</i> , 4 (5): e5723.
21 7/1/2009	Hadrosaur skin cell structures	66MY	Manning, P. et al, <i>Proc. Royal Soc. B</i> , 276: 3429-3437.
22 10/2/2009	Permian-Triassic fungal chitin	250MY	Jin, Y. G. et al, <i>Science</i> , 289 (5478): 432-436.
23 8/18/2009	Squid ink	160MY	Whalley, P. R. et al, <i>Geology Today</i> , 24 (3): 96-98.
24 11/5/2009	Salamander muscle, whole	18MY	McNamara, M. et al, <i>Proc. Royal Soc. B</i> , 277 (1880): 423-427.
25 2/25/2010	<i>Sinosauropteryx</i> melanosomes	125MY	Zhang, F. et al, <i>Nature</i> , 463: 1075-1078.
26 5/14/2010	Mammal hair in amber	100MY	Vullo, R., <i>Naturwissenschaften</i> , 97 (7): 683-687.
27 5/18/2010	<i>Archaeopteryx</i> original feather remnants	150MY	Bergmann, U., <i>PNAS</i> , 107 (20): 9060-9065.
28 8/9/2010	Mosasauro blood, retina	65-68MY	Lindgren, J., <i>PLoS ONE</i> , 5 (8): e11998.
29 11/12/2010	Penguin feathers	36MY	Claire, J. A. et al, <i>Science</i> , 330 (6006): 954-957.
30 2/7/2011	Chitin and chitin-associated protein	417MY	Cody, G. D. et al, <i>Geology</i> , 39 (3): 255-258.
31 4/1/2011	C-14 date of mosasauro (24,800 Yrs)	70MY	Lindgren, J. et al, <i>PLoS ONE</i> , 6 (4): e19446.
32 3/23/2011	Lizard tail skin, Green River	40MY	Edwards, N. P. et al, <i>Proc. Royal Soc. B</i> , 278: 3209-3218.
33 8/8/2011	<i>T. rex</i> and hadrosaur Type I Collagen	68MY	San Antonio, J. D. et al, <i>PLoS ONE</i> , 6 (8): e20381.
34 6/30/2011	Bird feather pigment	120MY	Wogelius, R. A. et al, <i>Science</i> , 333 (6049): 1622-1626.
35 2013	<i>Triceratops</i> horn soft tissue whole sheet	67MY	Armitage, M. H., and K. L. Anderson, <i>Acta Histochemica</i> , 115 (6): 603-608.
36 10/15/2015	Tube worm chitin	551MY	Moczydlowska, M. F. et al, <i>J. Paleontology</i> , 89 (2): 224-239.
37 7/9/2015	<i>Brachylophosaurus</i> collagen sequence	75MY	Bertazzo, S. et al, <i>Nature Communications</i> , 6: 7352.
38 9/15/2016	<i>Psittacosaurus</i> skin scale keratin	120MY	Vinther, J., et al, <i>Current Biology</i> , 26 (18): 1-7.
39 1/31/2017	<i>Lufengosaurus</i> rib collagen	190MY	Lee, Y.-C. et al, <i>Nature Communications</i> , 8: 14220.
40 8/29/2017	Dinosaur eggshell protoporphyrin, biliverdin	66MY	Wiemann, J. et al, <i>PeerJ</i> , 5: e3706.
41 4/18/2018	Conodont keratin residue	252MY	Terrill, D. F. et al, <i>J. of Analytical Spectrometry</i> , 33: 992-1002.

Selection of Published Reports of Original Soft Tissue Fossils

Papers that were excluded from the list include those with dubious verbiage, especially those that discussed "soft tissues" but failed to specify whether or not the tissues were original or chemically altered to a more resistant material. Those papers that specified the latter were also excluded, to the best of the author's ability to discern. The chart demonstrates that a multitude of verified original soft tissue and biochemical "clocks" have set maximum ages of thousands of years to samples that had all been assigned ages of millions of years.

Soft tissue in '70 MYO' *T rex* bones



Science 307(5717):1952, 25 March 2005

- These tissues cannot be 68 million years old; they must be no more than few thousands only, e.g.:
<https://www.smithsonianmag.com/science-nature/dinosaur-shocker-n5306469/>
- Moreover; 250 MY old bacteria DNA was found intact, e.g.:
<http://www.newscientist.com/article/dn82-eternal-life.html>
- Better yet 250 MY old bacteria was revived, e.g.:
<http://www.nature.com/articles/35038060>

ANTHROPOLOGY EVIDENCE OF YOUNG UNIVERSE

37



From 2 humans to 7.3 billion takes few thousand years only. In 1963 the population increase rate hit its highest value at 2.19% per year. Now it is 1.14%. At 2% it takes about 1,100 years only. Where are the trillions? ($P = P_0 e^{r \cdot t}$)

If we are here for millions of years, where are the trillions of buried people? And where are the bones and graves as humans have always buried their dead?

BIOLOGY EVIDENCE

38

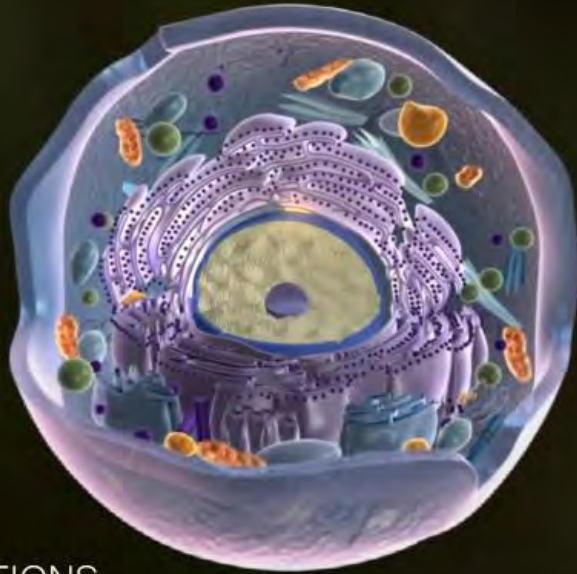


How did the first living cell come from nonliving material?

How can anyone think that an incredible planet like our earth can come haphazardly?

BIOLOGY EVIDENCE

39



A&O PRODUCTIONS



All living being consists of microscopic cells, what are the chances even that first cell was accidentally formed?

The building material of the cells are thousands of protein each is formed meticulously by instructions in the DNA out of up to 20 Amino Acids. The mathematical odds of building just 1 amino acid is 1 in 10^{164} .

This is 10^{114} times smaller than what scientists consider impossible to happen!

Conservative probability calculation estimates that infinitesimal small number for the human enzymes, mind you developing the numerous body systems like respiratory, circular, digestion, reproduction, ..etc. Besides, all these systems must exist in perfect working conditions right from the beginning otherwise all would be in vain.

N.B.: the estimated number of all the particles in all the seen universe is JUST 10^{80} , the enzyme probability is $10^{2,824,920}$ time LESS than the universe particles number including me and you.

R P
a r
v o
i b
a b
n i
d l
i t
y



M
O
V
I
E

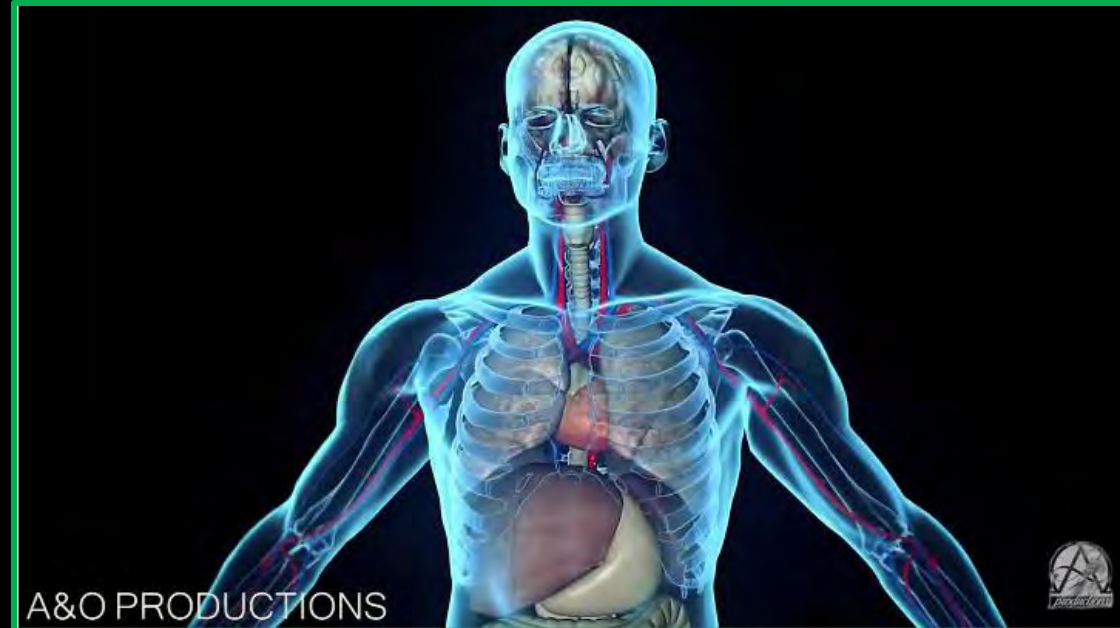
T
I
M
E

Please use control + left-mouse click on the link or copy and paste into browser address bar then come back to this page

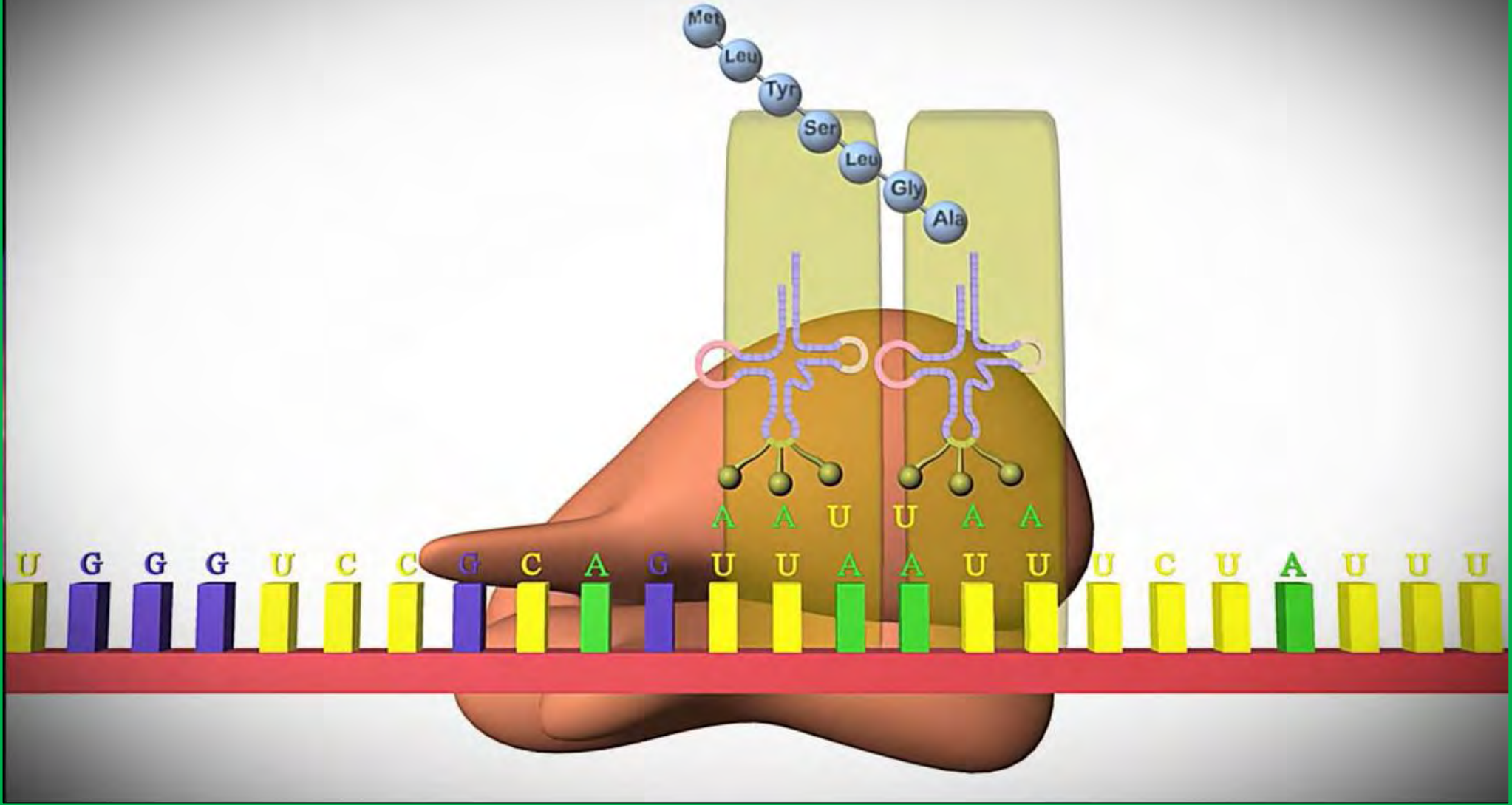
<https://onedrive.live.com/?cid=085CE661AE2045EA&id=085CE661AE2045EA%21250269&parId=085CE661AE2045EA%21250009&o=OneUp>

BIOLOGY EVIDENCE

41



100 trillion cells, 10,000 can fit on the head of a pin! And every cell contains 3 billion bits of information = 5,000 books = 200 telephone directories.

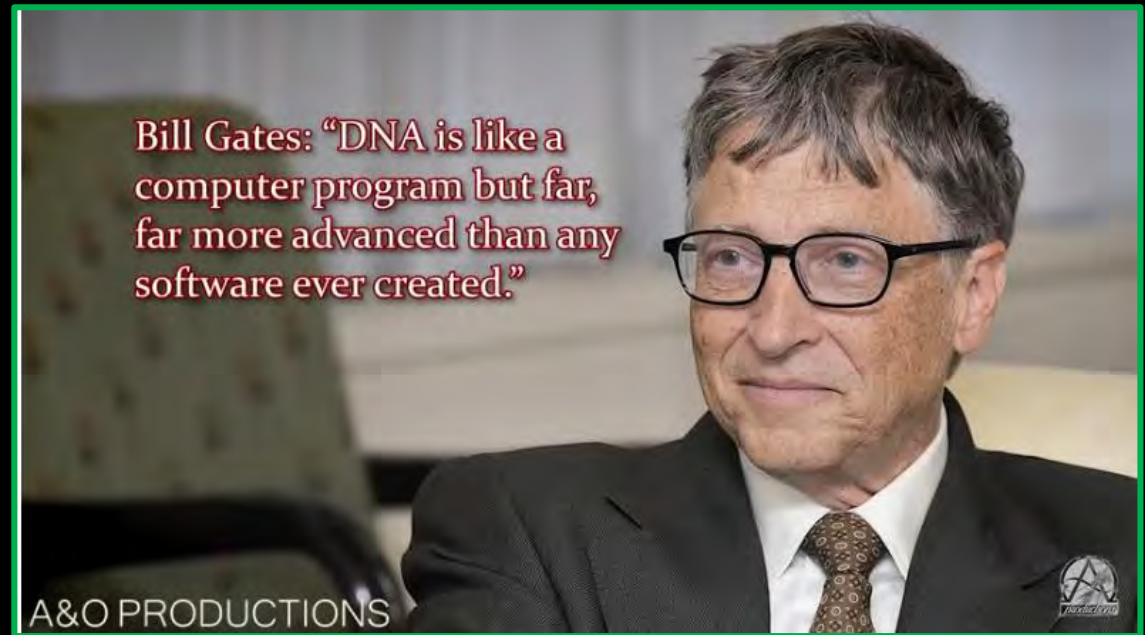


Please use control + left-mouse click on the link or copy and paste into browser address bar then come back to this page

<https://onedrive.live.com/?authkey=%21AAIFLhIEhj2peHE&cid=o85CE661AE2045EA&id=85CE661AE2045EA%021225218&parId=85CE661AE2045EA%021225217&o=OneUp>

BIOLOGY EVIDENCE

43

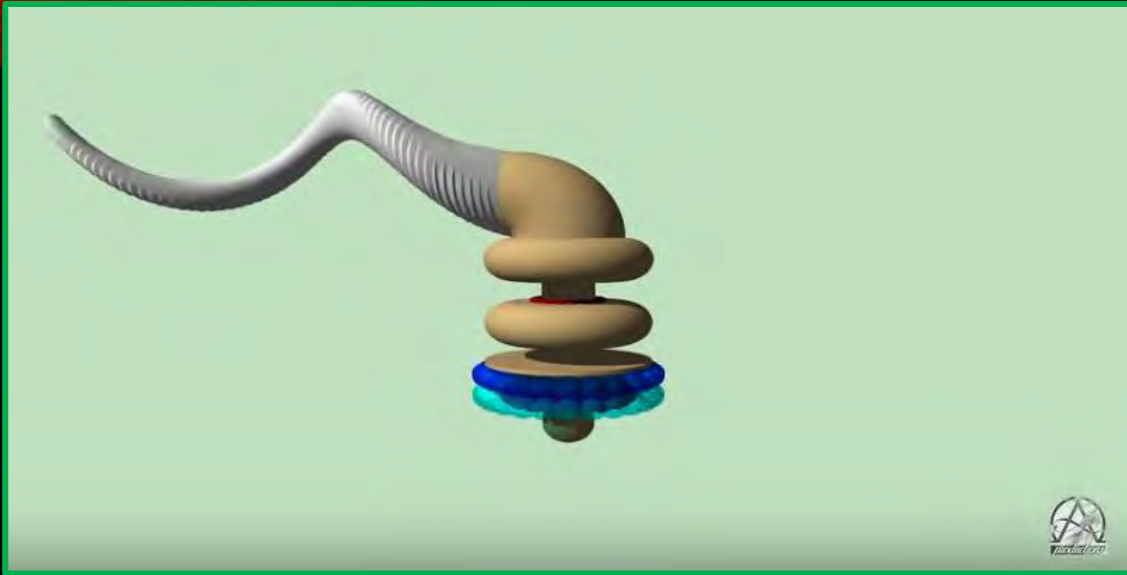


Each cell has numerous molecular machines, like freight trucks and highways, DNA copier, DNA corrector, ..etc. The cell is like very sophisticated proteins factory controlled and operated by a supercomputer all in a molecular sized space.

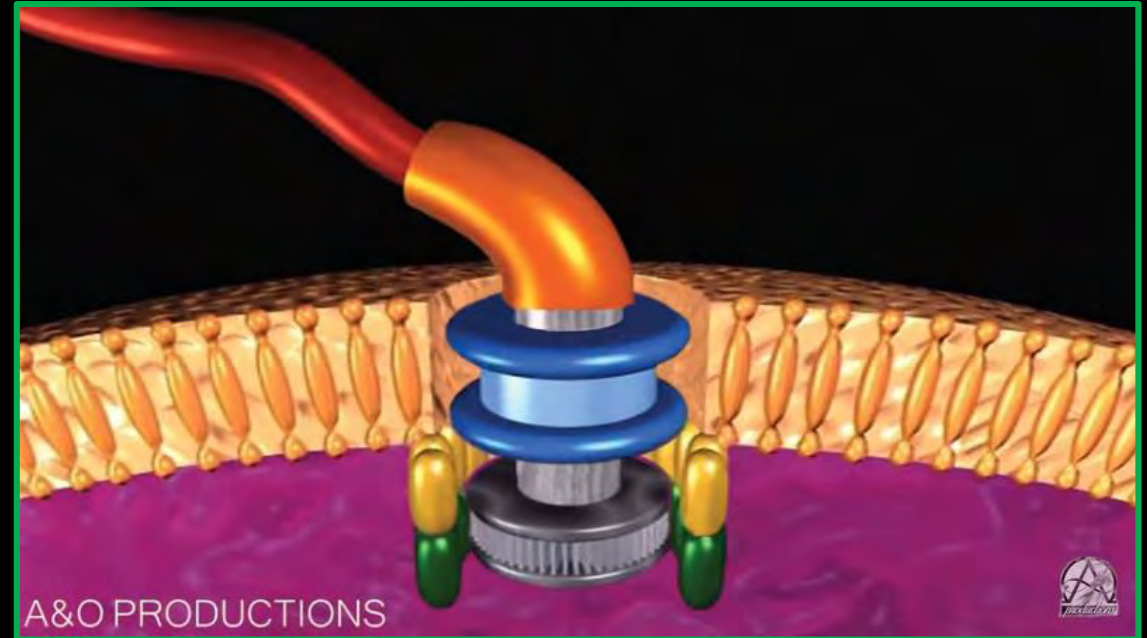
- Here you have it from the rich and famous programmer guru.
- Even novice would admit design comes ONLY from designer, mind you the DNA ingenious design.

BIOLOGY EVIDENCE

44



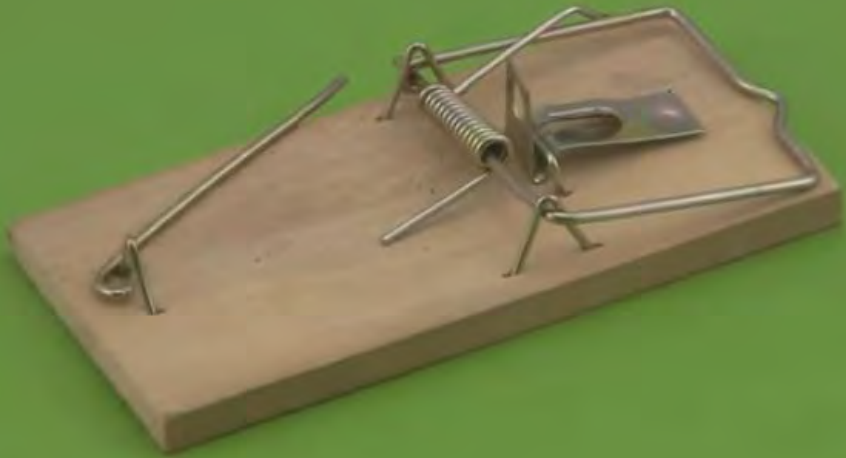
One of the molecular machines in Bacteria is the Flagellum. 5–20 μm Rotary motor, up to 100,000 rev/min, reverses in $\frac{1}{4}$ rev, moves up to speed equivalent to human swimming 60 miles/hr. Composed of 30 precise parts, perfect design. N.B.: world record of human speed is 5.5 miles/hr.



If any of the flagellum's 30 parts is missing the motor will not work and the bacteria will die. All 30 parts (different protein molecules) must be assembled properly together at the same time otherwise the bacteria will be extinct. In the evolutionary system how can these parts know to assemble themselves gradually?

BIOLOGY EVIDENCE

45

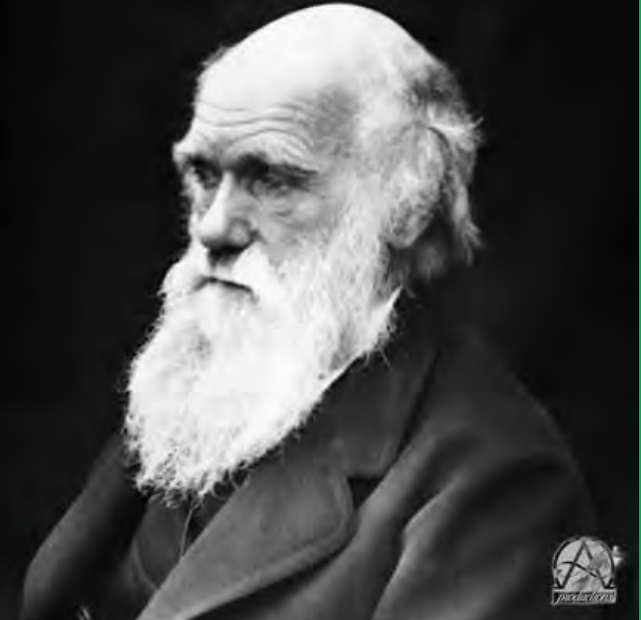


A&O PRODUCTIONS

“blind”

“undirected
process”

“without
either plan
or purpose”



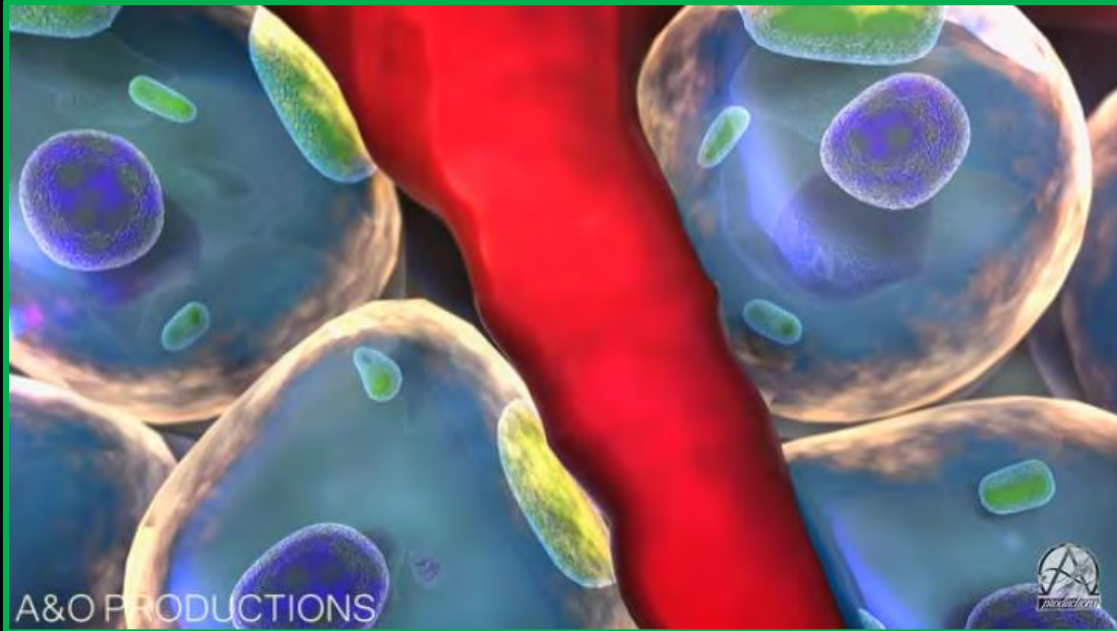
A&O PRODUCTIONS

Flagellum motor is perfect example of Irreducible complexity, missing any of the 30 parts renders the flagellum incapacitated. All must be created at once.

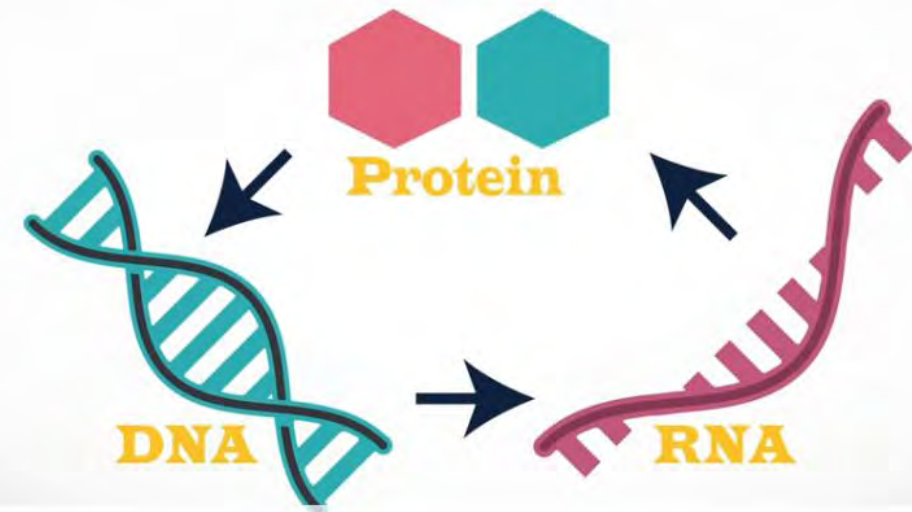
Irreducible complexity, among many others, serves Darwin evolution KO blow. Evolution is an unguided, blind, heartless, mindless, unconscious, brutal undirected, haphazard process.

BIOLOGY EVIDENCE

46



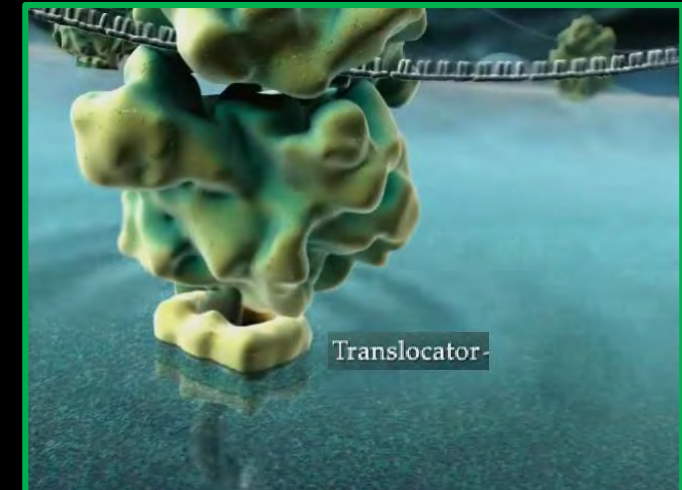
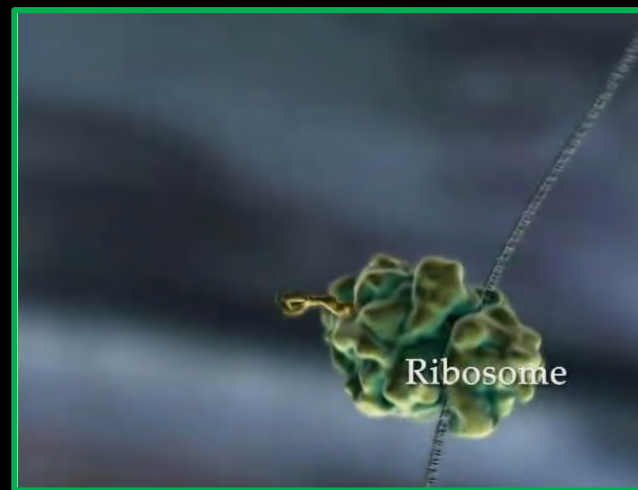
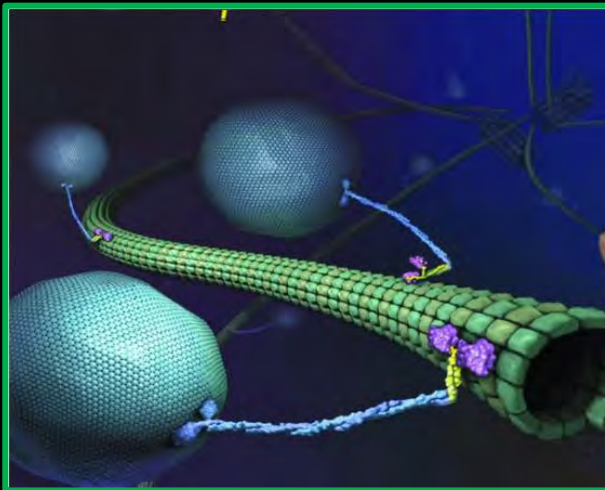
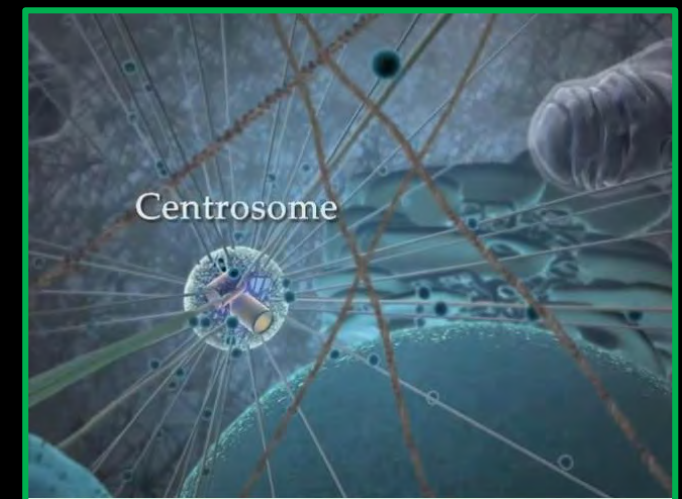
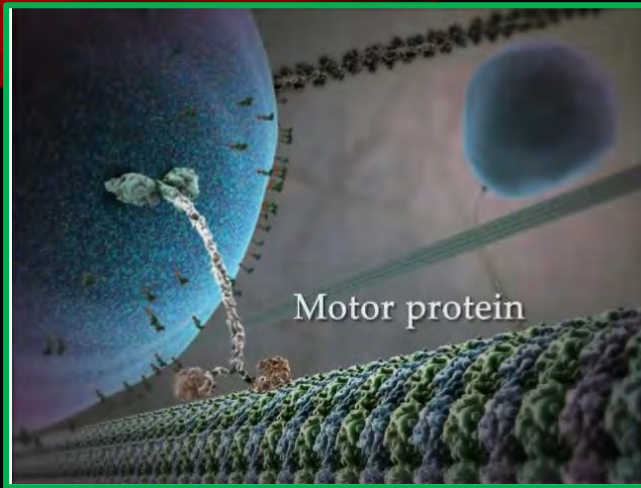
Cells consist of 1000's of different proteins, each of which is composed of 50-1000 molecules of up to 20 amino acids. The simplest cell requires 600 protein molecules.



It takes Protein + DNA + RNA to build Protein to build a cell. How can anything get started unless these three interdependent parts exist at the same time?

BIOLOGY EVIDENCE

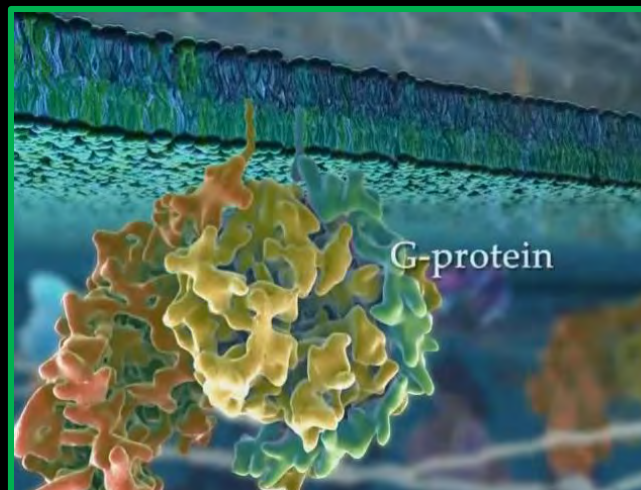
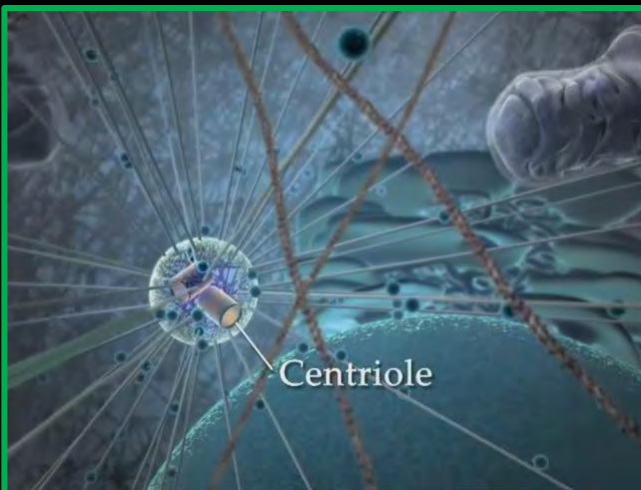
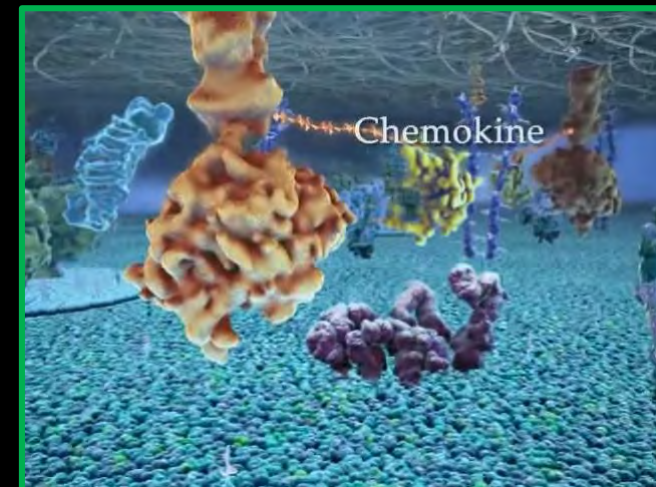
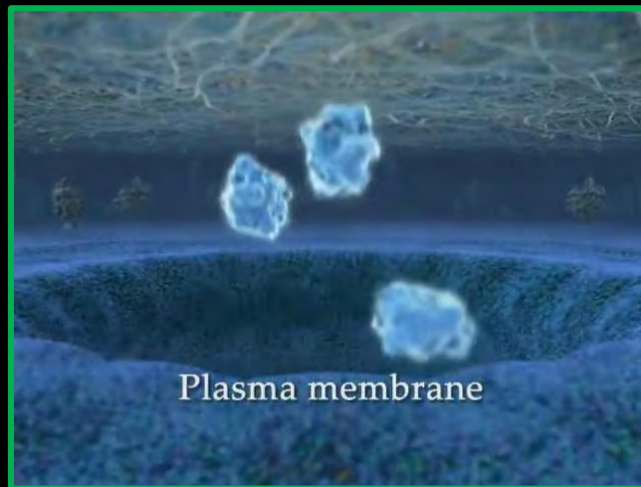
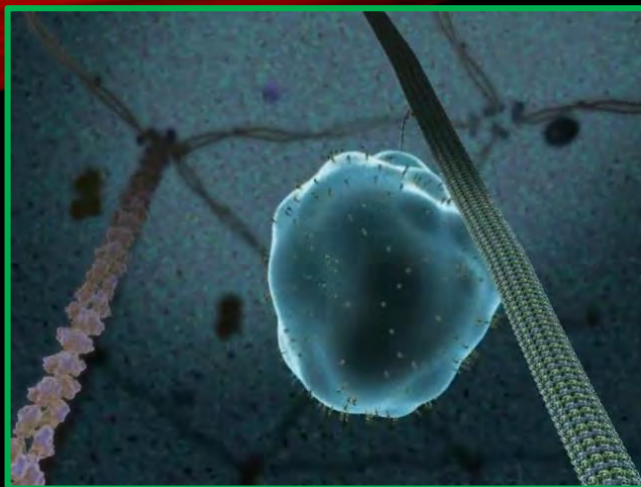
47



Nano machines inside each cell. They build new machines, copy sections of the DNA, produce new proteins, remove garbage from the cells, bring nutrition, duplicate cells, ...etc.

BIOLOGY EVIDENCE

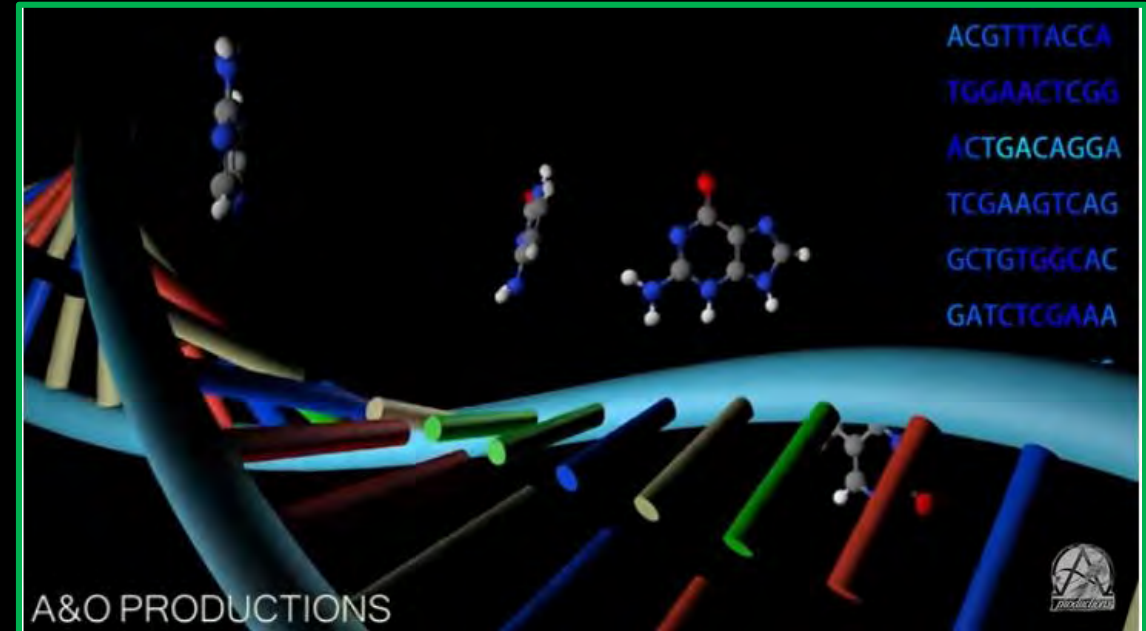
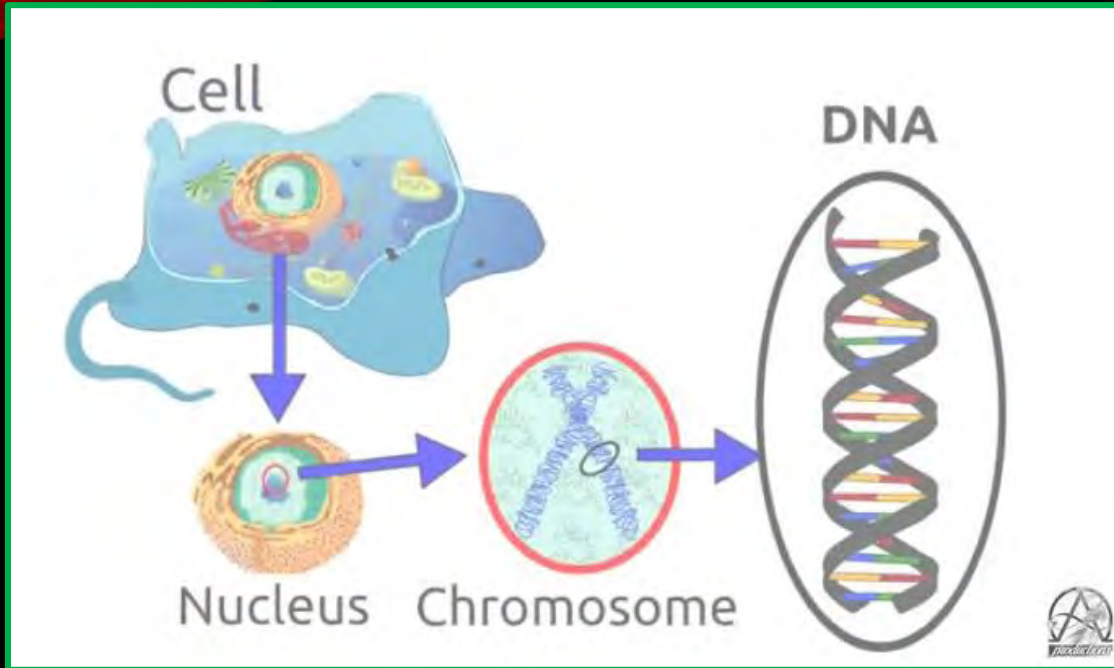
48



More nano machines

BIOLOGY EVIDENCE

49

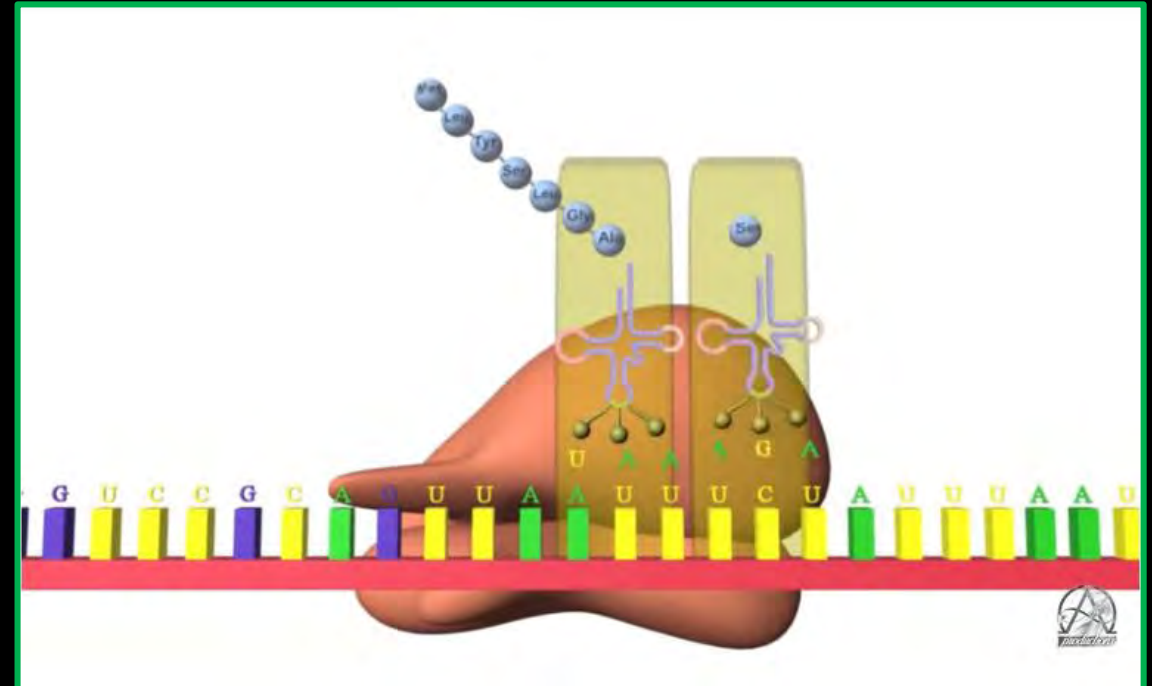
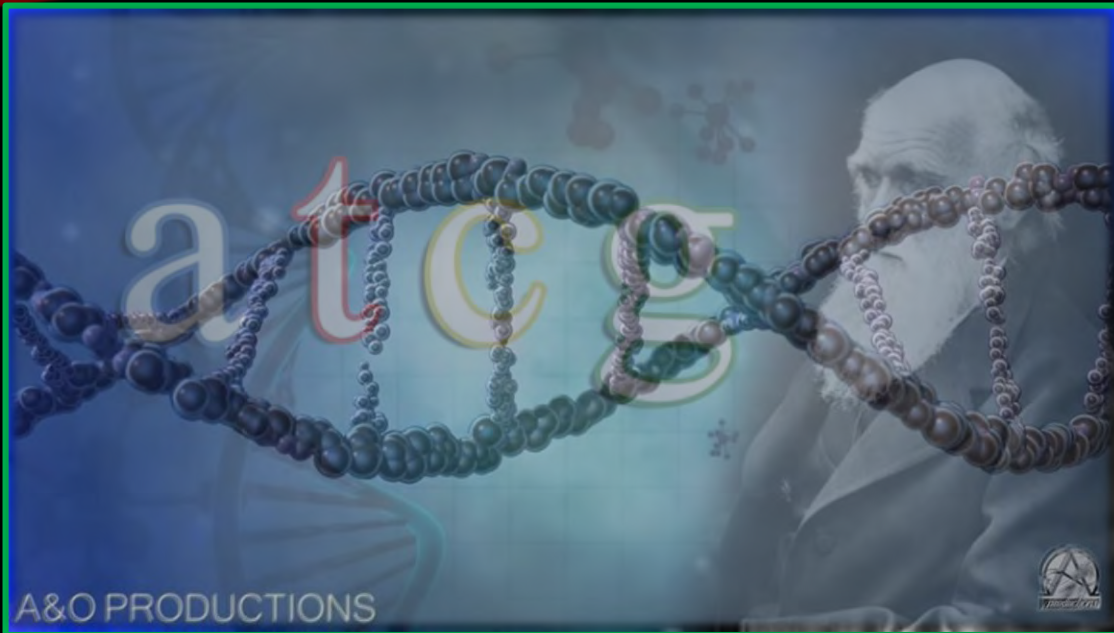


DNA is the instruction book to build all the proteins. 0.000,000,2 MM wide by 7' long. All the DNA of all the people that ever-lived weigh less than an aspirin pill

DNA uses 4 chemical letters. If the DNA did not exist from the beginning no protein could be built. It consists of at least 75 proteins; they are built only by the DNA. Do you see the chicken and egg here?

BIOLOGY EVIDENCE

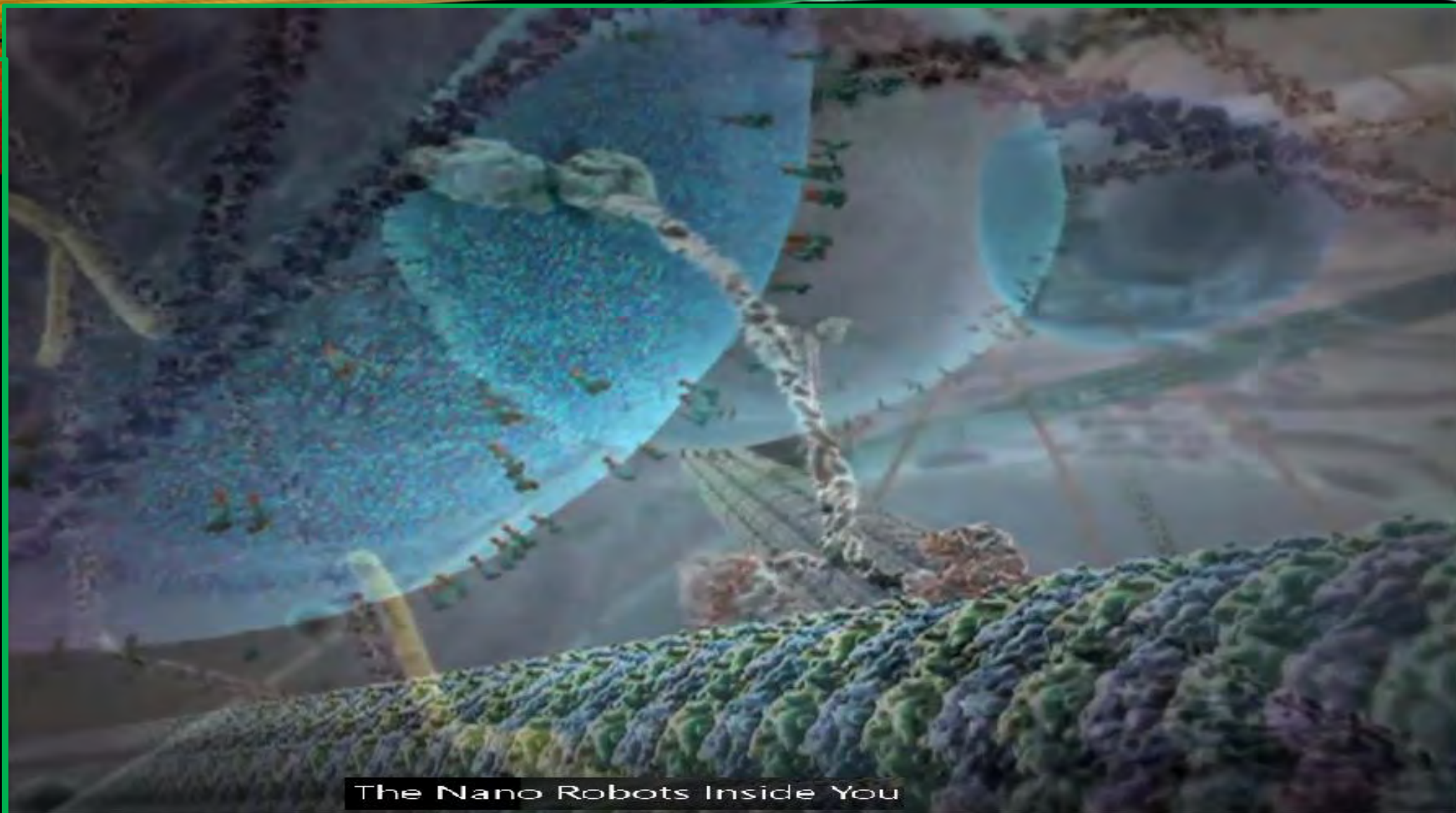
50



NA consist of protein, but the protein is produced by the DNA! So both must exist right from the beginning.

Copying sections of the DNA to get the “recipe” to build a protein.

T
h
e
N
a
n
o
o
f
M
a
c
h
i
n
e
s



*M
O
V
I
E

T
I
M
E*

Please use control + left-mouse click on the link or copy and paste into browser address bar then come back to this page

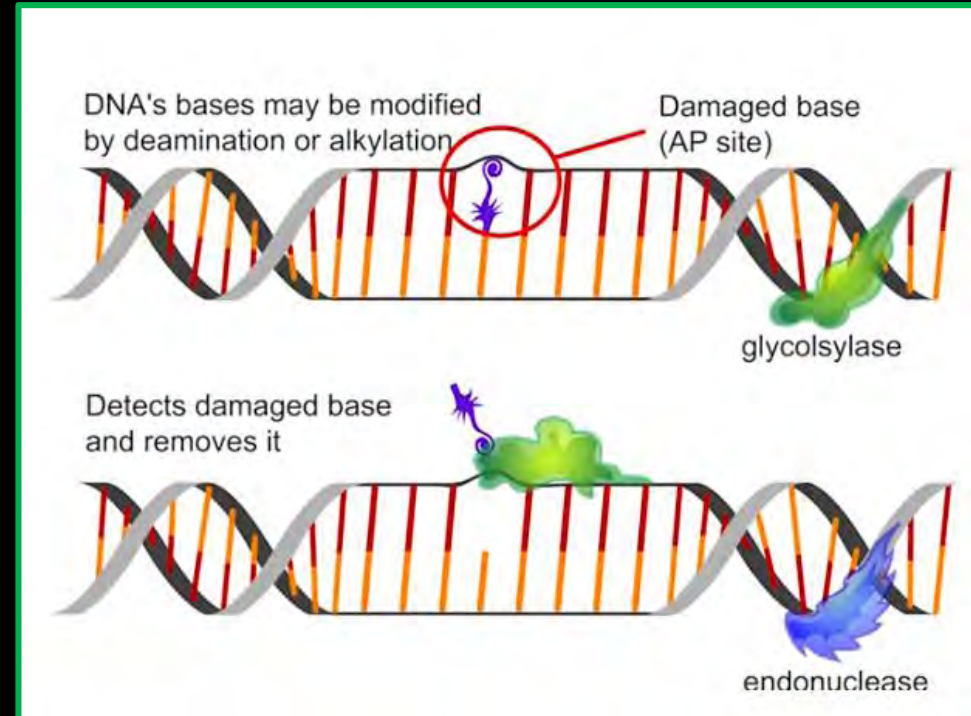
<https://onedrive.live.com/?authkey=%21AFC3V2JBdzCIxbo&cid=o85CE661AE2045EA&id=85CE661AE2045EA%21249093&parId=85CE661AE2045EA%21232386&o=OneUp>

BIOLOGY EVIDENCE

52



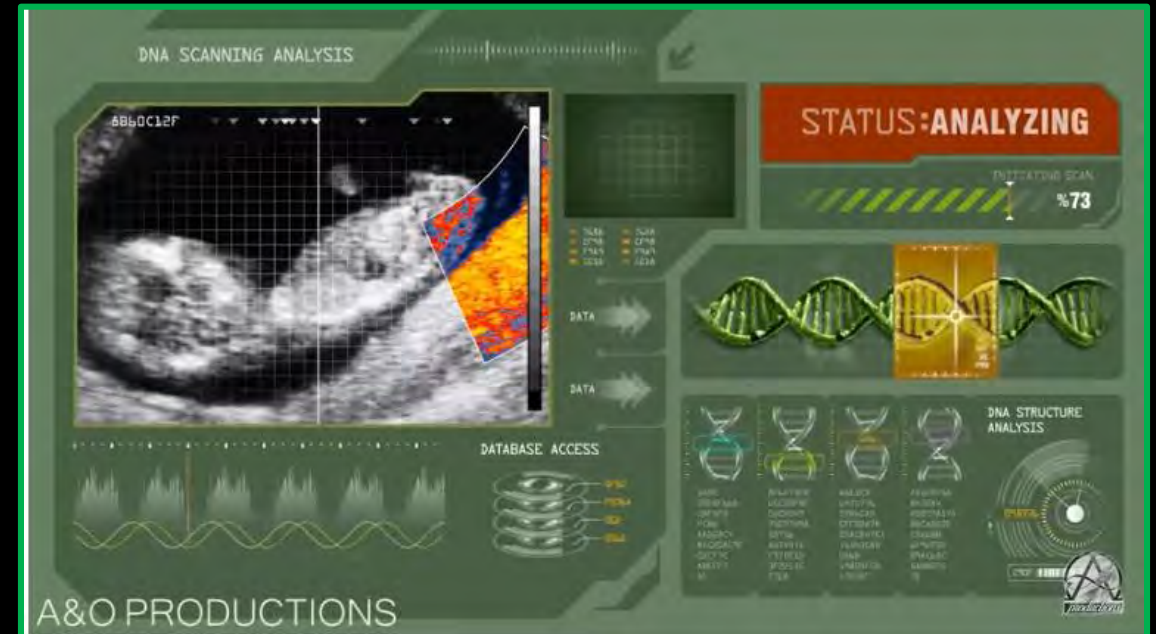
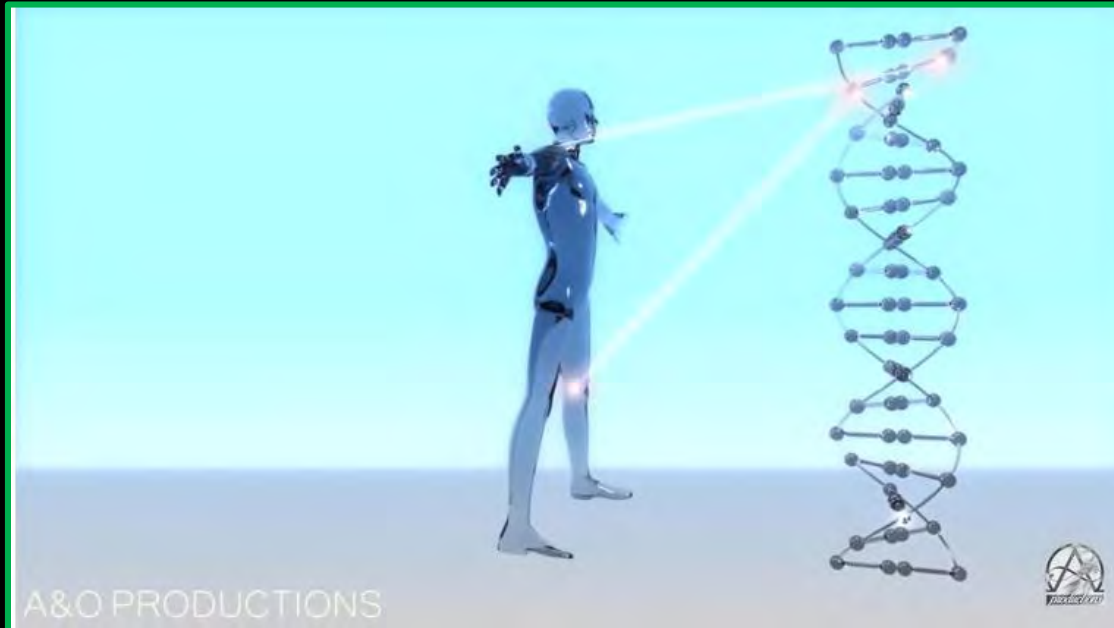
DNA duplicates itself. DNA alone is insufficient, there are nanomachines which read it and use it. DNA with all its enigmatic design is just the data bank or the hard disk of the living cell, the real processor that conducts and controls the DNA, RNA, Mitochondria DNA, all the nano machines, ..etc. inside the cell I believe is still unknown yet. How much more this processor is enigmatic. More importantly, the ingenious designer engineer, GOD, who designed it and blew the breath of life into us.



Proofreading routine machines detect and correct DNA errors successfully at a rate of 99.9% to curb mutations which ironically are alleged to produce evolution!

BIOLOGY EVIDENCE

53



DNA is ingenious intelligence. Intelligence must come from intelligence and not from material. It gives every minute details of your body. Intelligence must come from intelligence, i.e., designer.

Embryo starts as one cell less than the head of the pin, yet it has all the specific details of the future 100 trillion cells of the body. In one month all organs are developed.

BIOLOGY EVIDENCE

54

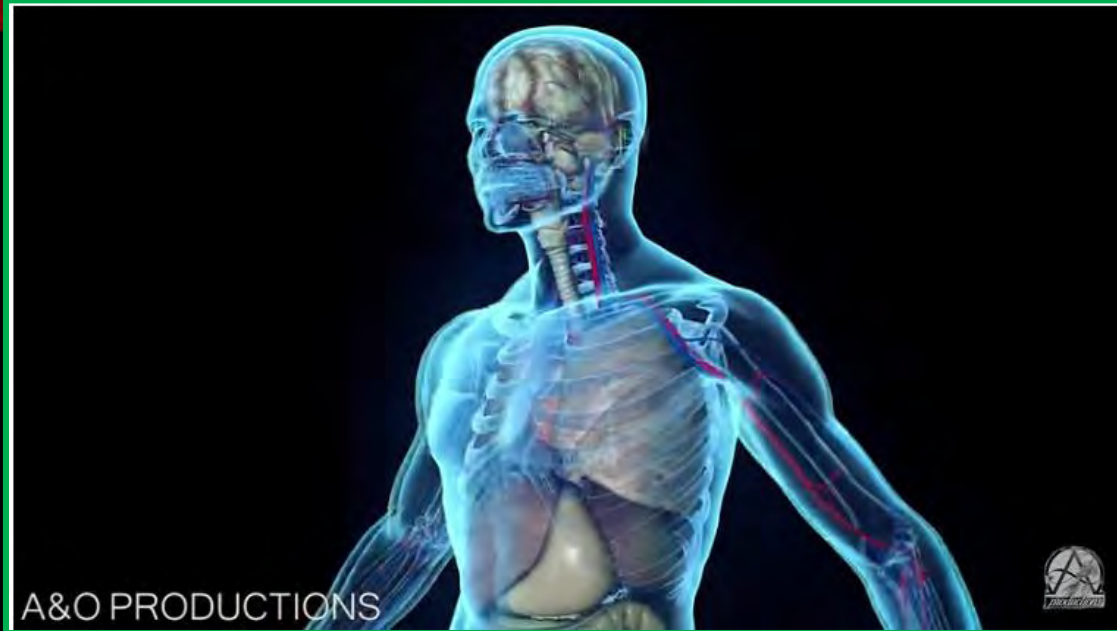


- The fertilized egg has all the information to build perfect human. Evolution has no explanation for the incredible complexity involved in conception and birth or even a reason for reproduction itself.
- All biological systems (sight, hearing, digestion, ...etc.) are precisely indicated in the fertilized cell then in each cell of your body.

After 2 months an embryo still fits inside a walnut shell, yet all organs are there. Evolution thinks that all complex and complementary system of all living beings happened independently and by chance! However, for instance, just a slight incompatibility between the two independent male and female reproduction systems renders both useless. Mind you this is not only in human but also in every animal, bird, or plant.

ANTHROPOLOGY EVIDENCE

55

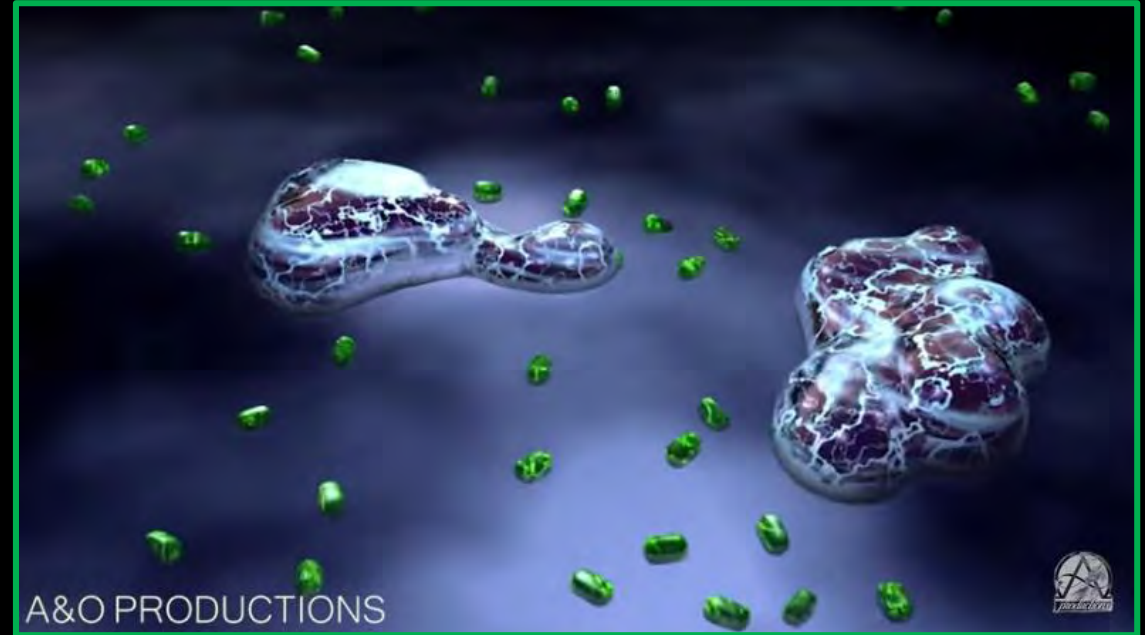
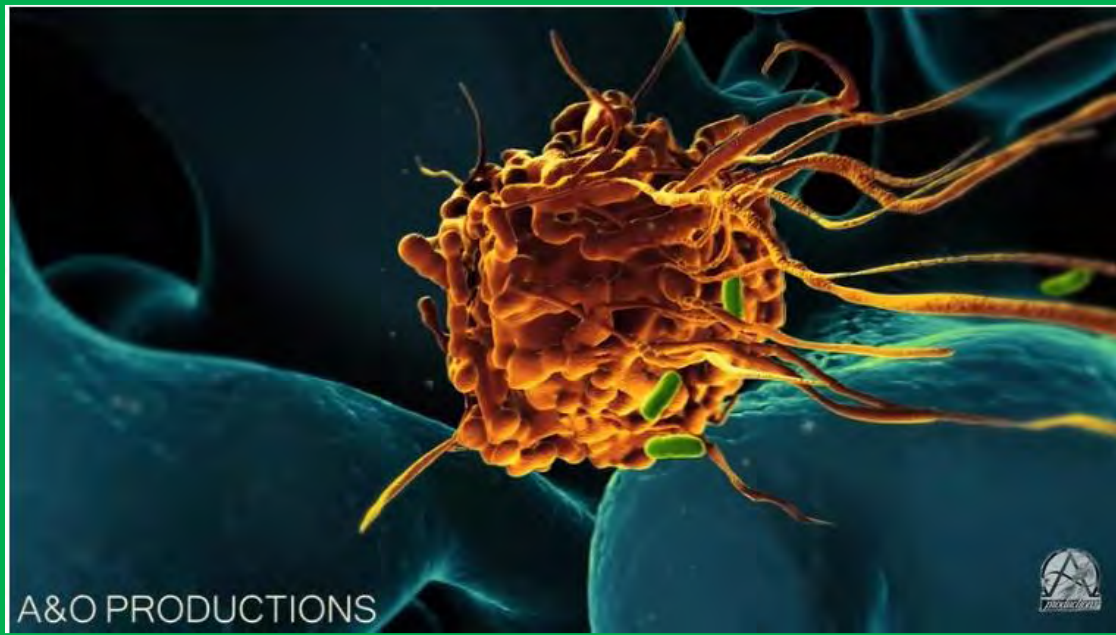


How did living beings live before the organs evolved? Or if males or females evolved without the other?

All fossils that were thought missing links turned out to be fully apes or fully humans or fake.

BIOLOGY EVIDENCE

56

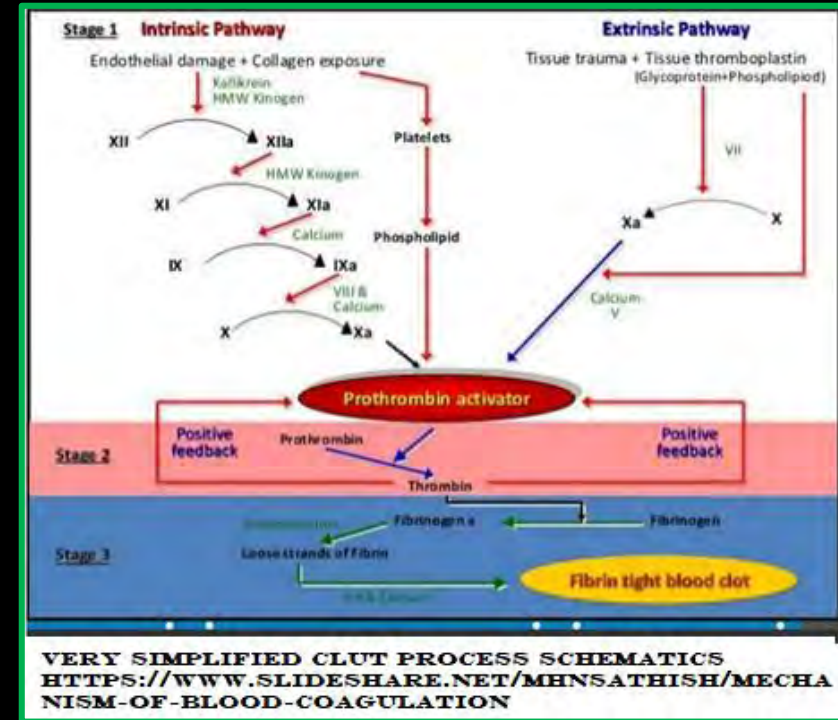
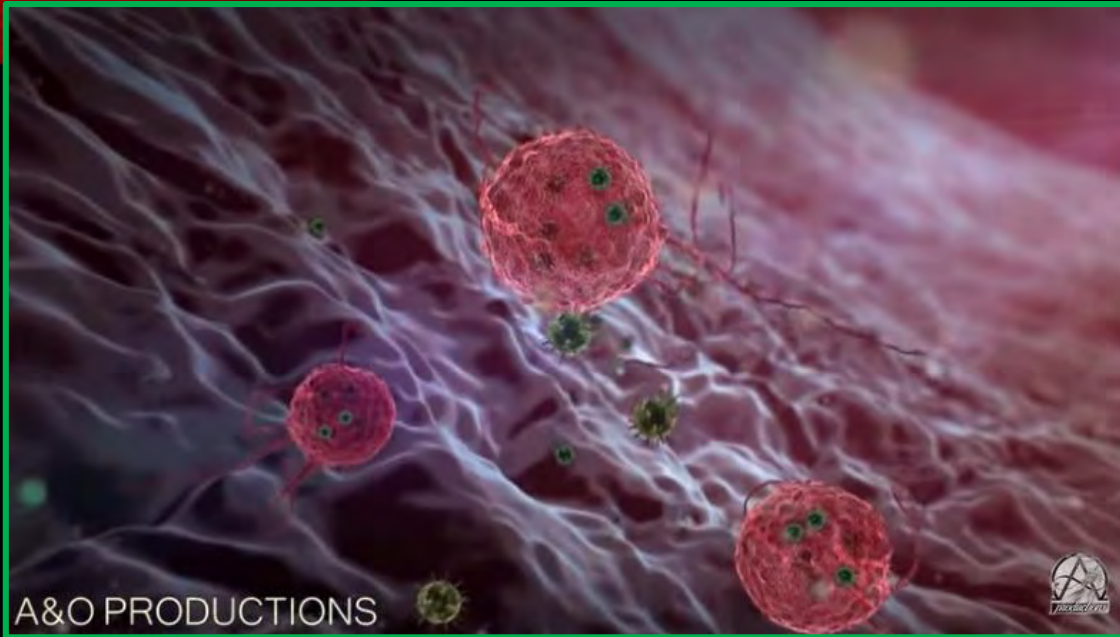


Evolution has no explanation for consciousness or immune system. White blood cells are on mission to find bad bacteria and destroy it. How does it know friend from foe without intelligence?

The killer white blood cells: The immune system must know in advance what is friend and foe right from the beginning otherwise we would have been extinct.

BIOLOGY EVIDENCE

57

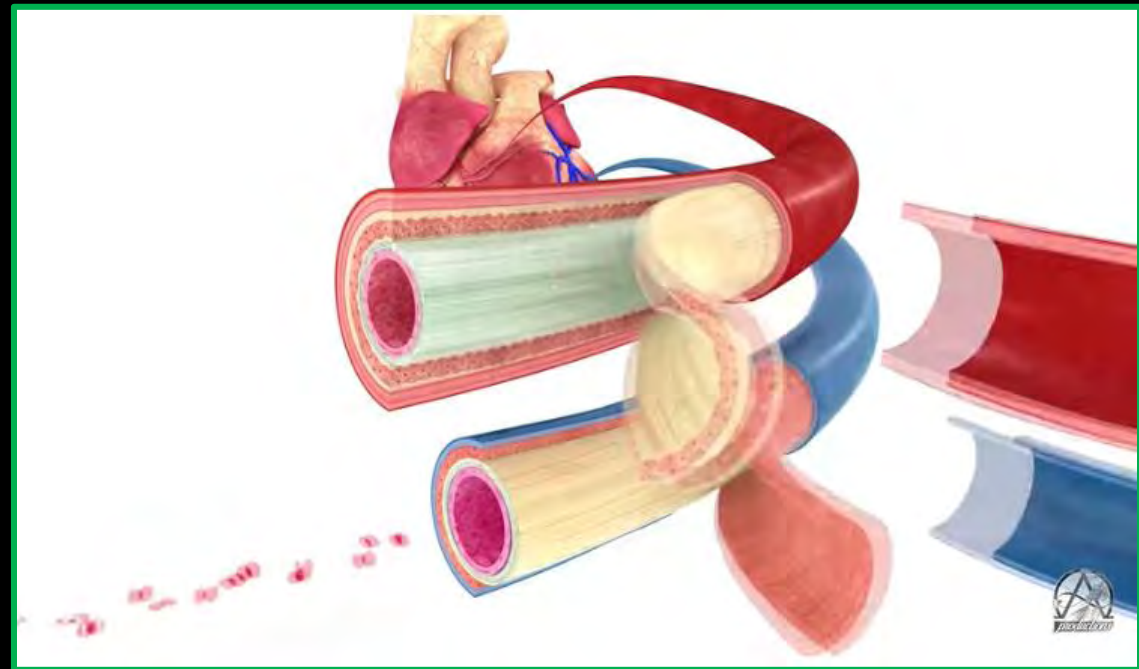
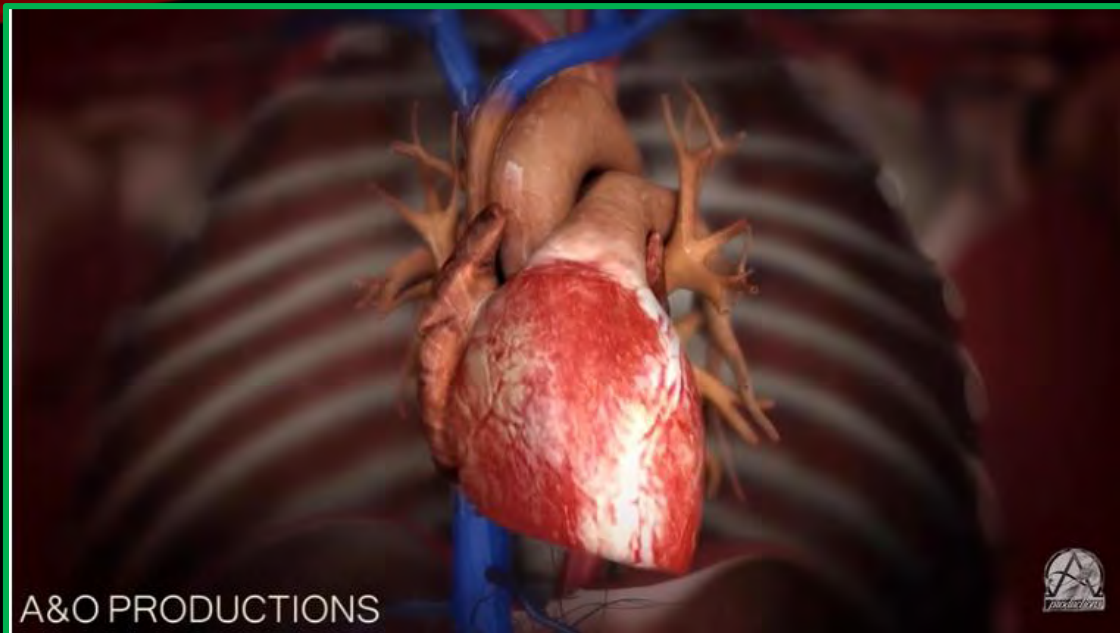


The circulation system for example, it provide countless jobs such as carrying nutrition and Oxygen, to the cells and removing garbage and CO₂ away, moderates the body temperature, ..etc. How could such a complicated system evolve piece wise haphazardly?

Evolution has no explanation for the highly complex and efficient blood clotting process. If blood clots happened in the heart or brain person would die, and if it did not happen at wounds fast enough person dies too from bleeding. Or if it doesn't cover the whole cut or if it spreads the blood would solidify producing death.

BIOLOGY EVIDENCE

58



What came first, blood or the heart which pumps the blood? Both must be from the start.

What came first, blood arteries or heart, how did human survive before all these were right from the beginning?

BIOLOGY EVIDENCE

59

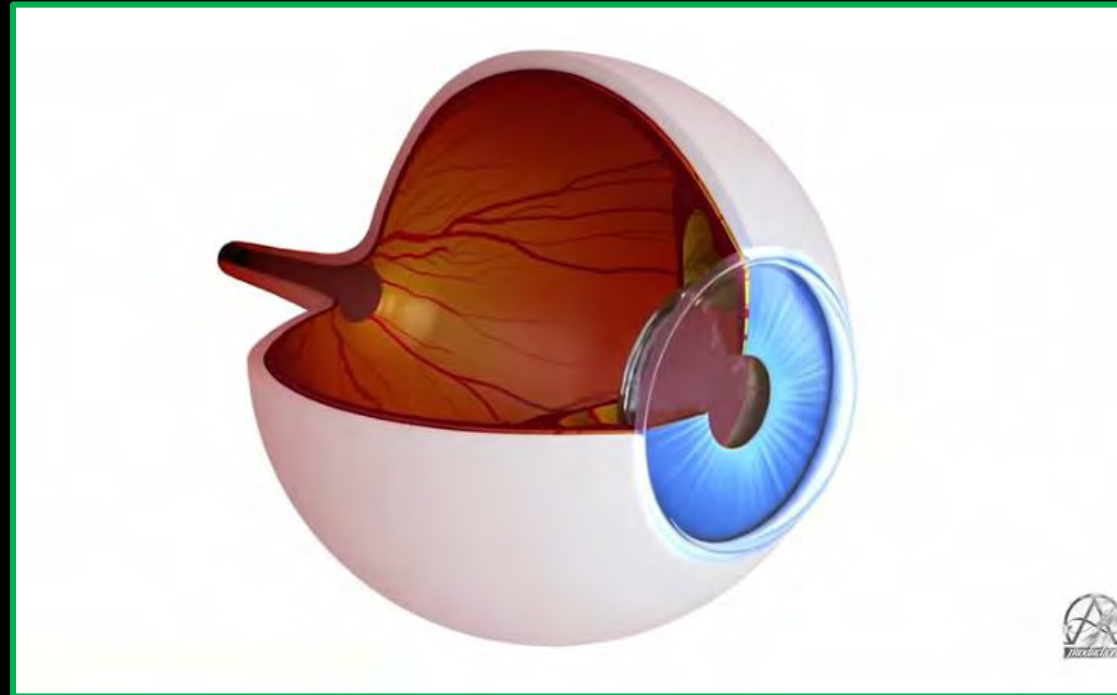


- The most complicated system in the whole world.
- The adult brain contains 10^{14} electric connections, that is more than all the electrical connections in the world.
- It is estimated (Werner Gitt, information systems chair, Germany) that the brain handles 10^{24} Bits of data daily, equivalent to more than all human knowledge ever.

- Even super computers are not a close match to your brain.
- It took the fastest computer in the world (Japanese) some 40 minutes to simulate the calculations which take place in the retina in one second!

BIOLOGY EVIDENCE

60



- The retina is less than 1² inch, yet it includes more than 137 million light sensitive cells all of which are wired to the brain.
- It can heal & clean itself, automatic focusing, automatic aperture opening, distinguish between millions of colors.
- If the eyes are off even by slight degree you will see double.

LOGICAL EVIDENCE

61



This amazing design is not only in human, it is found in every animal, bird, fish, & plant.

- SETI (Search of Extra-Terrestrial Intelligence) is scanning the skies unsuccessfully for decades & billions of Dollars to find just one single complex signal.
- If they find just one such signal, they conclude intelligence must have produced it.
- Look not too far, DNA, you have billions of copies of it in your body.

LOGICAL EVIDENCE

62



Why not apply the same standard of thinking process to the DNA?

If they did, they will conclude that intelligence must have put this incredible design in the DNA because intelligence must come from intelligence. And we are seeing here not just intelligence but extraordinary intelligence one.

G
O
D

I
S

N
O
T

D
E
A
D



*M
O
V
I
E

T
I
M
E*

Please use control + left-mouse click on the link or copy and paste into browser address bar then come back to this page

<https://1drv.ms/v/s!AupFIK5h5lwIj55QdnSOShPPh06-8Q?e=CBiOMC>

Liberal Logic 101



**I've made up my mind;
don't confuse me with facts.**

<http://LiberalLogic101.com>

(Yes, they are that stupid)



CONCLUSION & QUIZ

What you must get out of this and how much you really got

CONCLUSION

This conclusion may touch upon issues that were not handled in details in this presentation. Such issues were mentioned as prelude for the rest of this series.

1. Many scientists think science killed God but on the contrary science provides undisputable evidence of God's existence. This presentation handles this subject.
2. It started 1790-1859 by self-declared geologists planted doubt in the age of the earth and in the flood (C. Hutton & J. Lyle) and biologist (C. Darwin) planted doubt in God during the revolution age to get rid of governments and authorities, God at first place.
3. Unfortunately, this led to racism, communism, Nazism, concluding in the bloodiest 20th Century.
4. However by end of the 20th Century the science and technology advanced exponentially bringing vast knowledge of many disciplines such as microbiology, astronomy, geology, anthropology, ..etc. This knowledge provided undisputable evidence of incredible design by a loving, kind, omniscient, righteous, holy, omnipotent divine creator about 6,500 years ago.

CONCLUSION

5. After 2500 years of Aristotle philosophy that the universe (time, space, & matter) has no beginning science concluded that it does, and it started as big explosion in “nothing” creating all the billions of galaxies including trillions of stars and planets 14.6 billion years ago. This is wrong scientifically because nothing starts without cause (1st & 2nd law of thermodynamic). On the contrary, the Bible starts with the “**In the beginning God created the skies and the earth**” Genesis 1:1 showing clearly God created time (in the beginning), space (skies), and matter (earth). And because God created time, space, and matter He must be outside the time, space, & matter exactly as the Bible teaches since over 3,400 years.
6. The Big Bang makes no sense too because it says the whole universe was concentrated in a region less than a dot. The gravity would be so insurmountable, and nothing can escape a greater power was applied.

CONCLUSION

7. Science determined that the universe must have been provisioned and designed with very great precision. Many parameters are so precise and it is absurd to think haphazard explosion can cause it. For example the initial expansion rate of the universe is precise to the nearest 1 in 10^{120} ; the universe would have collapsed or suffered heat death for a change of decimal point followed by 120 zeros then 1 change. Many other cosmic parameters have more or less similar infinitesimal accuracy. Only an omnipotent God can control such accuracy.
8. It was found that there are numerous parameters and conditions for a planet convenient for life as the earth. Some scientists estimate conversely that the chance of having a planet like the earth is 1 in 10^{138} . We can appreciate this infinitesimal small chance considering that the number of all the particles in the universe is just 10^{80} .

CONCLUSION

This supports the belief that the earth was created by a personal kind God who inspired Isaiah 45:18 to state: “For thus saith the Lord that created the heavens; God himself that formed the earth and made it; he hath established it, he created it not in vain, he formed it to be inhabited: I am the Lord; and there is none else.”

Examples of purposeful creation of the right conditions for the earth to sustain our life:

- i. The sun is the right temperature, good stability to provide moderate temperatures and climate changes on the earth.
- ii. The earth has the right size, almost circular orbit around the sun, perfect distance from the sun to have moderate temperatures and climate changes.
- iii. The earth rotation around its axis is the right speed, if it was too slow the difference in day and night temperature would be very high. If the speed was too fast living being won't have enough time to rest or to do useful work

CONCLUSION

- iv. The earth has Oxygen-rich atmosphere to sustain life. The Oxygen ratio is optimal, if it was too high the atmosphere would be unstable and explosive, if too low it won't be suitable for life. The atmosphere is also transparent allowing sun light through which is essential for vitamin D production, plant photosynthesis, allowing us to explore the cosmos plus more benefits.
- v. The earth has magnetic field sheltering it from harmful cosmic waves.
- vi. The earth has a good perfect companion: The moon. It orbits around the earth at the right distance to allow for suitable tide waves stirring the ocean material thus preventing stagnation, it tilts the earth rotation axis by 23.5 degree just enough to produce climate seasons allowing various vegetations, its size relative to the sun and its location between the sun and earth is perfect to produce sun eclipse allowing us to study the sun nature intensely,

These are just few examples to show that although the scientists deny the existence of God the science is proving over and over that a personal, kind, loving, omnipotent God must have created and orchestrated all the universe.

CONCLUSION

- 9) Cosmology concluded that in a galaxy like ours a star explodes forming supernova and stays visible for millions of years on the average every 26 years. All the number of exploded stars in our galaxy is mere 250 supernovas. According to their science $250 \times 26 = 6,500$ a perfect match to the universe age according to Genesis. Another proof the science confirms God, not kills Him.
- 10) Science showed that many living beings depend on others for their living (symbiotic relation), such as:
- i. Bees and insects depend on most plants for nectar while plants depend on bees and insects for insemination.
 - ii. Protozoans that live inside termites and help them digest wood.
- Many of the symbiotic organism pairs cannot exist without the other which means they had to exist right from the beginning at the same time which points to intricate design, not haphazard evolution.

CONCLUSION

11. The science tries desperately to prove evolution by beneficiary mutations (never observed), natural selection, and survival of the fittest. A process which depends on gory competition and suffering and death of the weak members, while we see almost every living being cares and nurtures its fable young offspring which points to a loving kind creator. He even said in His Holy Book: “A righteous man regardeth the life of his beast: but the tender mercies of the wicked are cruel.” Proverbs 12:10. Observe what the verse says about evolution!
12. Science expected the solar system planets should be similar because they came from the same material at the same time by the same process, all is wrong pointing to an ingenious designer who gave each planet the right body to ultimately support and protect the earth.

CONCLUSION

13. Science discovered the exact number of supernovas that fits perfectly the Biblical time frame. Also the comets expected lifetime of 10,000 years and they still exist means the universe is not 10,000 years old yet.
14. The order, design, beauty, precision, vastness of the cosmos discovered by the science proves over and over it must be caused and sustained by loving, kind, compassionate, omnipotent being outside time, space and matter. The exact attributes God claims for Himself.
15. The blood and soft tissues found in dinosaur fossils since 1966 point without shadow of doubt to the correct earth age as given in the word of God. As does the human population number and number of graves.
16. Science assures that life comes only from life (Biogenesis) as well as intelligence comes only from intelligence necessitating existence of God.

CONCLUSION

17. Biology science discovered the incredible design, structure, activities, computational, memory capacity, the efficiency, and the infinitesimal size of the living cell mandating an ingenious designer as the source of life.
18. Biology science discovered the intricate and complicated & optimal structures and interdependency of vital organs of even the simplest creatures, mandates that any creature cannot evolve such organs because all of them must exist right from the beginning and in full functioning conditions otherwise the creature would have extinct long time before.
19. A larger mystery is even in the reproduction system of any kind. Two perfectly complementary organs, each exists in different body, male and female, however function perfectly from the beginning.

CONCLUSION

20. Another mind bugler for evolution: human emotions, speech, consciousness, intelligence, intellect, inspiration, mindfulness, ..etc. How can evolution evolve this in a bag of chemicals? These are adding more and more evidence requires submission to a great creator.
21. Points 17-20 are just few manifestation for “irreducible complexity” where some examples are shown of systems that easily seen to be consistent of main limited number of parts the loss of any renders the system incapable of performing its function or any functions. All the parts must exist and function properly right from the beginning. An oblivion, unconscious, heartless, brutal, mindless, unconscious, lifeless blind watch maker cannot evolve such a system. Such system is the crafting of a kind, loving compassionate, omnipotent, omniscient God as shown in the Bible.
22. And we did not talk yet in any details about DNA and that:

CONCLUSION

- i. Each of the 100 trillion cells in your body has exact copy of it.
- ii. It contains 3 billion bits of info giving full blueprint of your body.
- iii. It is like unprecedented very complicated software program.
- iv. It consists of thousands of proteins whose blueprints are in the DNA itself, egg & chicken dilemma.
- v. Each protein consist of up to thousands of amino acid molecules picked specifically out of 20 different amino acids. Conservatively, the formation of the simplest of them by blind chance is one chance in 10^{120} chances.
- vi. As sophisticated as it is the DNA is useless without molecular machines which can read it and use its information such as:
 - a. Duplicating micro machines
 - b. Protein builder micro machines
 - c. Error correcting micro machines
 - d. Micro machines to wind/unwind the DNA. ..etc.

CONCLUSION

vii. The cell itself has numerous molecular machines to perform its jobs such as:

- a. Protein synthesizer machines
- b. Enzyme synthesizer machines
- c. Freight machines to transport proteins and the like
- d. ATP machines to produce energy
- e. Mitochondria
- f. Epigenetic machine

23. Evolution is stunned by these issues mentioned in this presentation. There is no way for evolution: The lifeless, unconscious, heartless, brutal, mindless, unconsciousness, oblivion, lifeless blind watch maker to produce utterly nothing other than nothingness. All this mandates that science did not kill God, on the contrary, it crystalized and intensifies the need for GOD.



QUIZ

CHECK HOW MUCH YOU GOT AND REVIEW WHAT YOU DIDN'T.

QUIZ

1. What and why do many scientists think about God's existence?
2. During the period 1790-1859 which self-declared geologist and biologists wrote books which doubted certain basic knowledge. Mention the most famous three of them and what was their motivation?
3. What was the direct results of believing in evolution?
4. List some science disciplines discoveries which point to God existence?

QUIZ

5. Show:
 - i. why the big bang is unscientific
 - ii. What is the one element in the big bang that agrees with Genesis 1:1 and why this verse asserts that God is transcendental; i.e., He is outside time, space, and matter.
 - iii. What was thought about the universe's origin before the Big Bang.
 - iv. Why does the Big Bang conflicts with both the 1st & 2nd law of thermodynamic.
6. Why does the Big Bang conflict with the law of gravity.

QUIZ

7. What did science discover about the universe's parameters. Give examples.
8. How likely is that a life-supporting planet like the earth can exist? Give reasons.
9. How cosmology deduction about the frequency of supernova asserts the Biblical universe age of about 6,500 years in contrast of scientific billions of years?
10. Why do symbiotic relationships between species require creation? Give examples.

QUIZ

11. Why do the three tools of evolution (mutation, natural selection, & survival for the fittest) go against the ideology of our gracious God?
12. How was the solar system formed according to the Big Bang and does observational science confirm such assumption?
13. Why comets defy Big Bang?
14. What do the order, design, beauty, precision, vastness of the cosmos discovered by the science prove over and over?
15. What did Paleontologists find in fossils that points to a young earth? Give other example.
16. What is biogenesis law and how does it refute evolution?

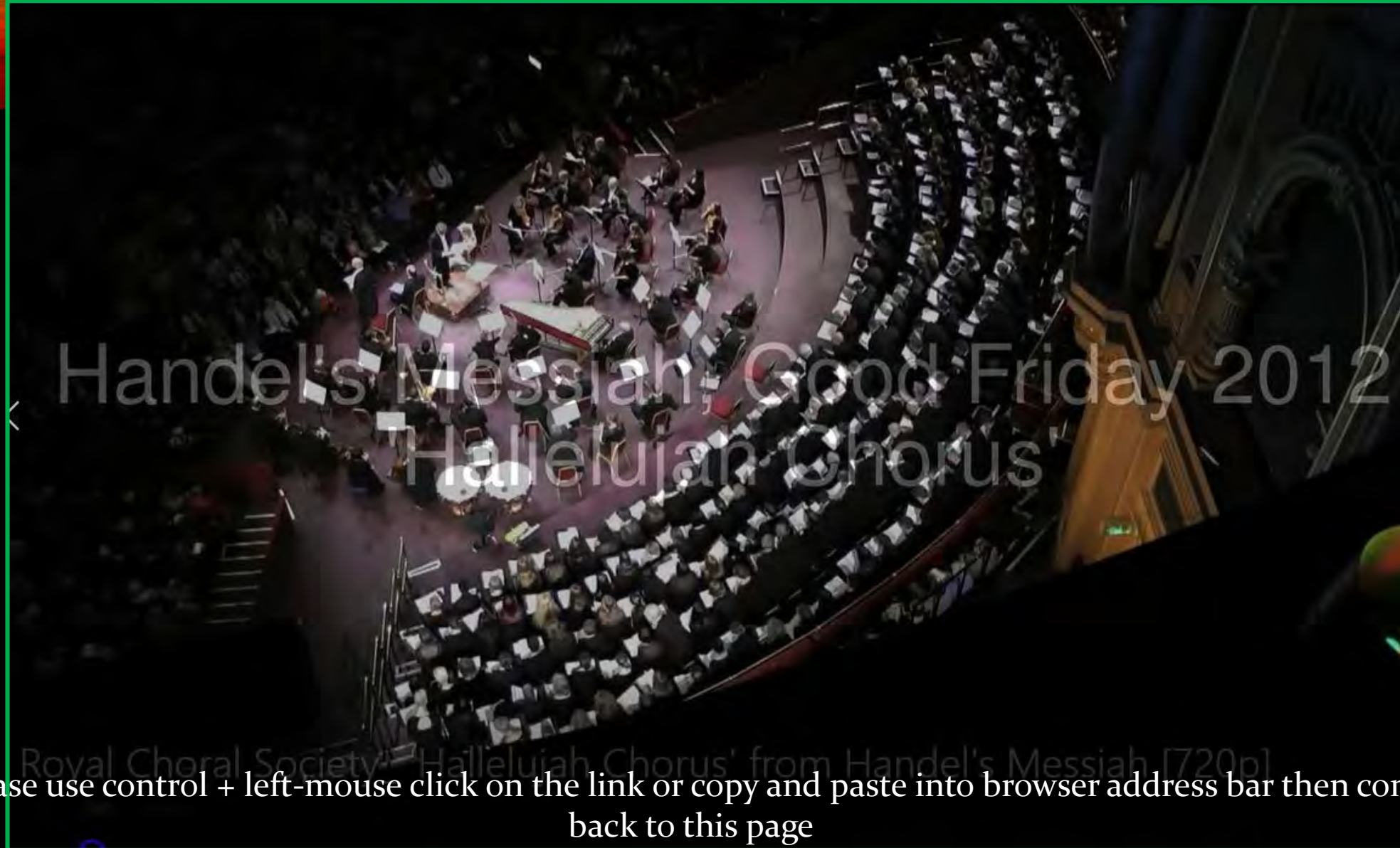
QUIZ

17. What did biology discover during the 20th century about the living cell and what does this knowledge mandate?
18. Why just simple study of even the simplest creatures physiology points to ingenious design & designer?
19. Explain why the reproduction system is an excellent case of defying evolution.
20. Mention some of the mental capabilities of humans that defy evolution.
21. Explain and give examples of irreducible complexity biological systems and give examples and why it points to creation.
22. What three-letter word in biology discovered in the 20th Century which blew a big hole in Evolution? List some of its characteristics.

QUIZ

22. What is the bottom-line of evolution feasibility?

HALLELUIAH



Please use control + left-mouse click on the link or copy and paste into browser address bar then come back to this page

<https://1drv.ms/v/s!AupFIK5h5lwIjd5UJkTk5NBUV9MMzQ?e=XiNdPQ>

*M
O
V
I
E*

*T
I
M
E*